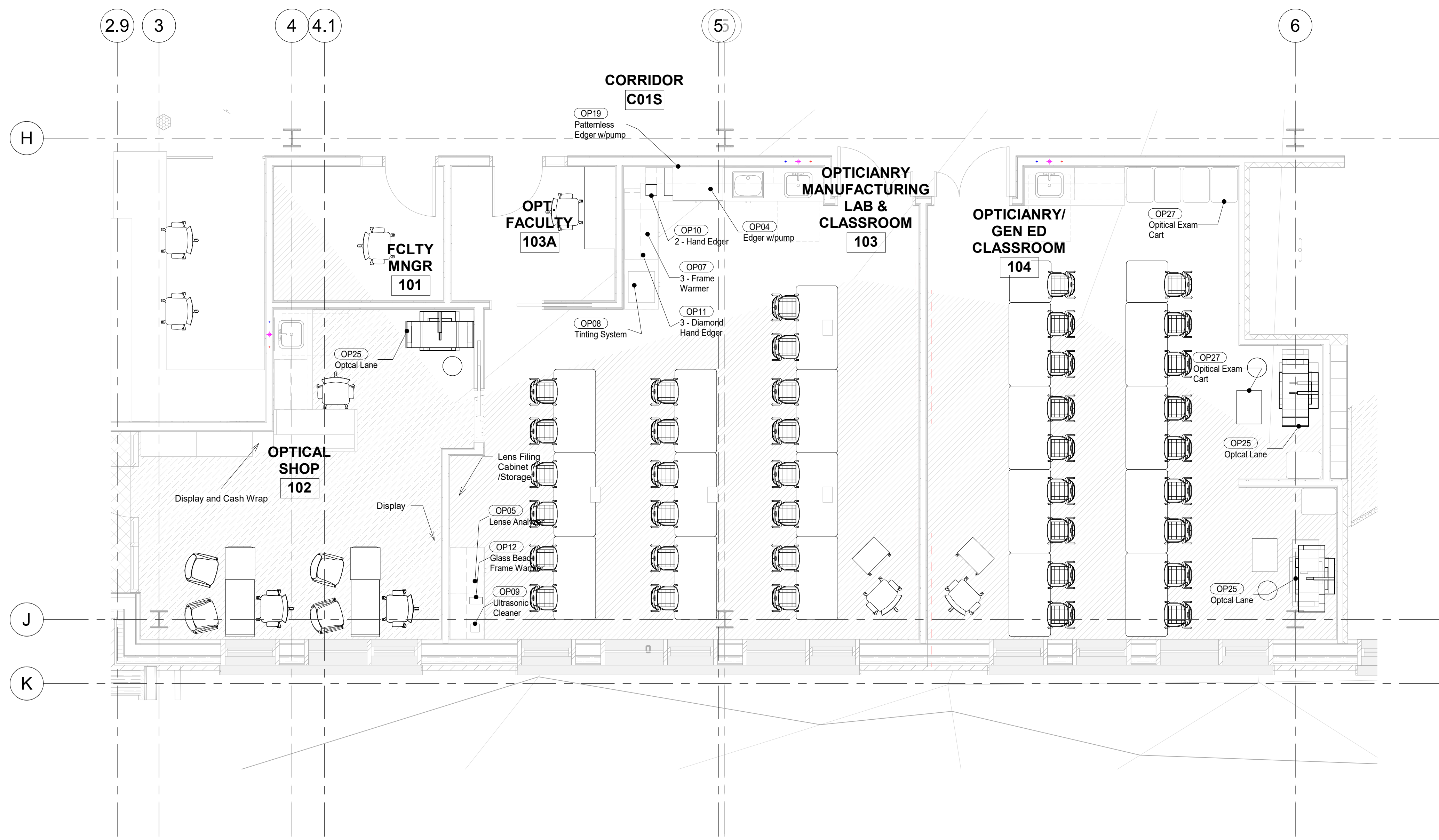


Code	REVIT...	Use f...	Desc	MFG	Model	New...	Existin...	L	D	H	CFM	HP	A	V	PH	Connection	Exhaust...	Web Link	Notes	
10.OP.0001	-	Yes New	Tall Storage	-	-	-	6	-	-	-	-	-	-	-	-	-	-	-	-	-
10.OP.0002	-	Existing Yes	Antique Ophthalmometer	-	-	-	2	-	-	-	-	-	-	-	-	-	-	-	-	-
10.OP.0003	-	Existing Yes	Antique Optometrist Scope	-	-	-	2	-	-	-	-	-	-	-	-	-	-	-	-	-
10.OP.0004	OP04	Existing Yes	Edger w/pump	Briot	Emotion	-	1	18	12	12	-	-	-	115/230	-	-	-	<a href="https://www.dtmmed.com/v...">https://www.dtmmed.com/v...</a>	H2O Connection and drain/Trap Needed	
10.OP.0005	OP05	Existing Yes	Lense Analyzer	Allergan Humphrey	330	-	1	-	-	TBD	-	-	-	120	-	-	-	<a href="https://picclick.com/humphr...">https://picclick.com/humphr...</a>	-	
10.OP.0006	-	Existing Yes	Lense Storage Unit	-	-	-	1	-	-	TBD	-	-	-	-	-	-	-	-	-	-
10.OP.0007	OP07	Existing Yes	Frame Warmer	Hilco	TempMaster	-	4	-	-	TBD	-	-	-	120	-	-	-	<a href="http://ophthalmicworldlic-c...">http://ophthalmicworldlic-c...</a>	-	
10.OP.0008	OP08	Existing Yes	Tinting System	BPI	Twin 8	-	1	20	8	23	-	-	15	120	-	-	-	<a href="http://callbpi.com/golf/inde...">http://callbpi.com/golf/inde...</a>	NEEDS HOOD/VENTILATION	
10.OP.0009	OP09	Existing Yes	Ultrasonic Cleaner	L&R	T9	-	1	6	3	6	-	-	-	120	-	-	-	<a href="https://www.useddentalequ...">https://www.useddentalequ...</a>	-	
10.OP.0010	OP10	Existing Yes	Hand Edger	Luxvision	-	-	2	8	14	8	-	-	-	120	-	-	-	<a href="https://www.amazon.com/P...">https://www.amazon.com/P...</a>	-	
10.OP.0011	OP11	Existing Yes	Diamond Hand Edger	OC Design	-	-	3	20	14	11	-	25	6	120	-	-	-	<a href="https://superaabrasive.com/...">https://superaabrasive.com/...</a>	-	
10.OP.0012	OP12	Existing Yes	Glass Bead Frame Warmer	Hilco	FrameMaster	-	1	9	5	3	-	-	-	120	-	-	-	<a href="https://www.threeveecompan...">https://www.threeveecompan...</a>	-	
10.OP.0013	-	Existing Yes	Asst. Small Hand Tools	-	-	-	1	-	-	-	-	-	-	-	-	-	-	-	-	-
10.OP.0014	-	Existing Yes	Progressive Lens Identifier	Essilor	PA-10	-	1	-	-	-	-	-	-	120	-	-	-	<a href="https://www.dtmmed.com/fi...">https://www.dtmmed.com/fi...</a>	-	
10.OP.0015	-	Existing Yes	Lensmeter	Burton	2020	-	12	-	-	-	-	-	-	120	-	-	-	<a href="http://www.optvision2020.c...">http://www.optvision2020.c...</a>	-	
10.OP.0016	-	Existing Yes	Auto Diamond Bevel Edging Machine	AIT	Dimension One 111	-	1	-	-	-	-	-	-	120	-	-	-	-	H2o Connection with Drain and Trap Needed	
10.OP.0017	-	Existing Yes	Bench Drill	Proxxon	-	-	1	13	9	4	-	-	-	120	-	-	-	<a href="https://www.amazon.com/B...">https://www.amazon.com/B...</a>	-	
10.OP.0018	-	Existing Yes	Blocker, Centering Device	Nidek	CE-1	-	1	-	-	-	-	-	-	120	-	-	-	<a href="https://picclick.com/Nidek-C...">https://picclick.com/Nidek-C...</a>	-	
10.OP.0019	OP19	Existing Yes	Patternless Edger w/pump	Nidek	LE-9000LX	-	1	21	20	13	-	-	-	115-230	-	-	-	<a href="https://www.sbay.com/tm/...">https://www.sbay.com/tm/...</a>	Pump Circulation or direct connection to tap water,...	
10.OP.0020	-	No Existing	Computer Station	TBD	TBD	-	1	-	-	-	-	-	-	120	-	-	-	-	-	-
10.OP.0021	-	TBD	Dispensing Table	TBD	TBD	-	2	-	-	-	-	-	-	-	-	-	-	-	-	CONFIRM
10.OP.0025	OP25	Existing Yes	Optical Lane	TBD	TBD	-	1	-	-	-	-	-	-	120	-	-	-	-	-	-
10.OP.0026	-	Yes New	Digital Vision Chart	TBD	TBD	1	0	-	-	-	-	-	-	120	-	DATA	-	<a href="https://www.ophthalmicequipment.com">Ophthalmic Equipment I...</a>	-	

Code	REVI...	Use for Project	Desc	MFG	Model	New...	Existing...	L	D	H	C...	HP	A	V	PH	Connection	Web Link	NOTES	
10.OP.0025	OP25	Yes Existing	Optical Lane	TBD	TBD	-	2	-	-	-	-	-	-	120	-	-	-	-	CONFIRM
10.OP.0026	-	Yes New	Digital Vision Chart	TBD	TBD	1	0	-	-	-	-	-	-	120	-	DATA	<a href="https://www.ophthalmicequipment.com">Ophthalmic Equipment I...</a>	Part of OP25 - CONFIRM	
10.OP.0027	OP27	Yes Existing	Optical Exam Cart	TBD	TBD	-	6	-	-	-	-	-	-	120	-	-	-	-	CONFIRM



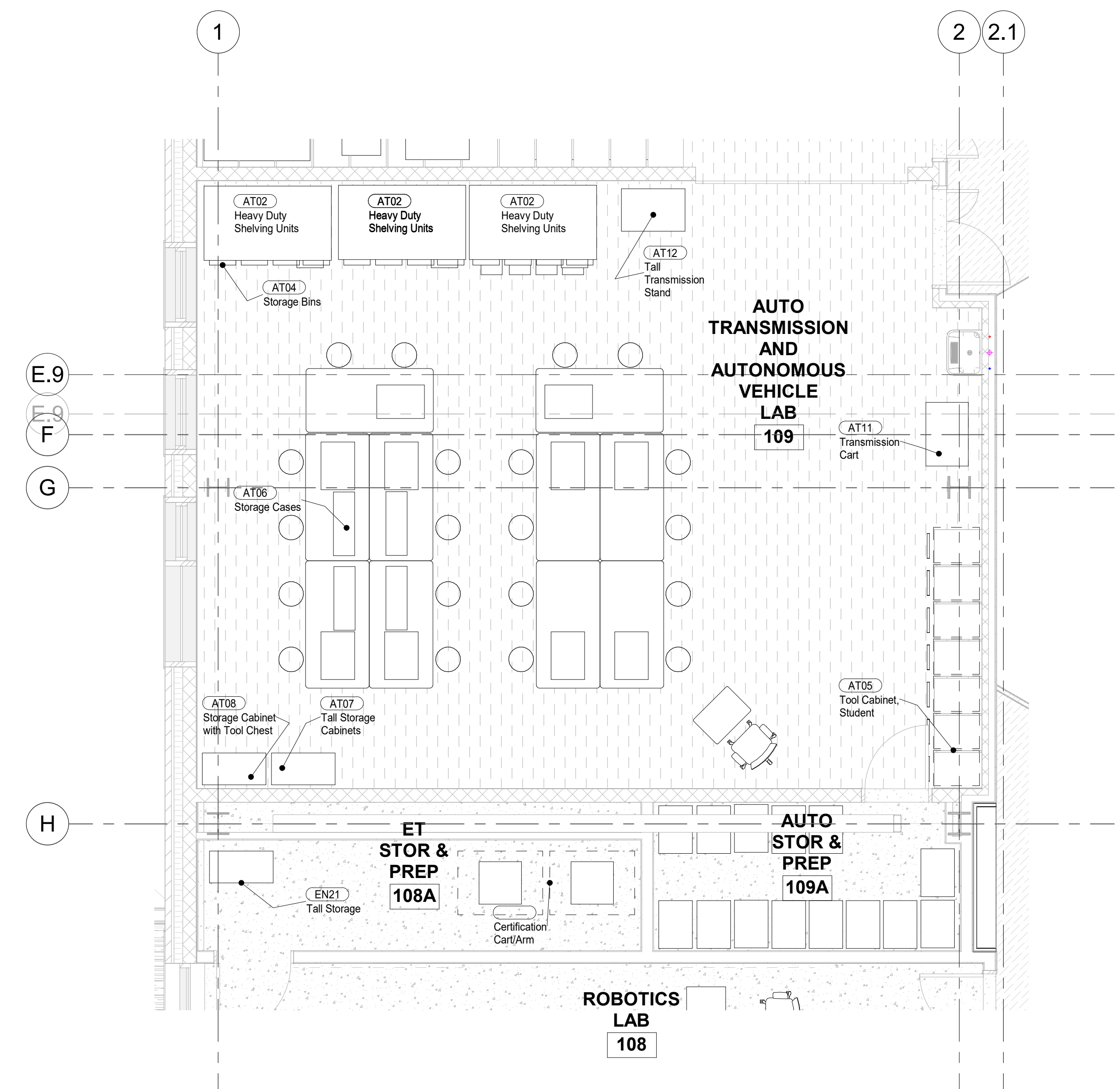
NO.	DESCRIPTION	DATE

PROJECT NO 21905.4  
DRAWN BY Author  
CHECKED BY Checker  
SCALE 1/4" = 1'-0"  
DATE 07/15/22

SHEET TITLE  
Optical - Rm 103

SHEET NO  
EQ.01

Code	REVIT TAG	Use for Project	Desc.	MFG	Model	New Qty	Exist Qty	L	D	H	HP	AMP	V	PH	Connection	Exhaust Port Size	Link	Notes
10.AT.0001	AT05	Existin...	Student Tool Boxes	Snap-On	KRA2007FPBO	0	7	20	26	37	-	-	-	-	-	-	https://sh...	-
10.AT.0002	AT02	Existin...	Heavy Duty Shelvin...	-	-	0	3	-	-	-	-	-	-	-	-	-	-	-
10.AT.0003	AT03	Existin...	Transmissions	-	-	0	30	-	-	-	-	-	-	-	-	-	-	-
10.AT.0004	AT04	Existin...	Storage Bins	-	-	0	15	-	-	-	-	-	-	-	-	-	-	-
10.AT.0005	-	Existing	Work Benches	-	-	0	6	-	-	-	-	-	-	-	-	-	-	-
10.AT.0006	AT06	Existin...	Storage Cases	-	-	0	8	-	-	-	-	-	-	-	-	-	-	-
10.AT.0007	AT07	Existin...	Tall Storage	-	-	0	1	-	-	-	-	-	-	-	-	-	-	-
10.AT.0008	AT08	Existin...	Storage Cabinet wi...	-	-	0	1	-	-	-	-	-	-	-	-	-	-	-
10.AT.0009	-	Existin...	Steel Top Tables	-	-	10	12	-	-	-	-	-	-	-	-	-	-	-
10.AT.0010	-	Existin...	Stools	-	-	20	24	-	-	-	-	-	-	-	-	-	-	-
10.AT.0011	AT11	Existin...	Transmission Cart	-	-	0	1	-	-	-	-	-	-	-	-	-	-	-
10.AT.0012	AT12	Existin...	Tall Transmission...	-	-	0	1	-	-	-	-	-	-	-	-	-	-	-
10.AT.0013	-	Existing	CAN Bus Trainer	Matrix	-	0	3	-	-	-	-	-	115v	1	-	https://w...	CONFIRM	



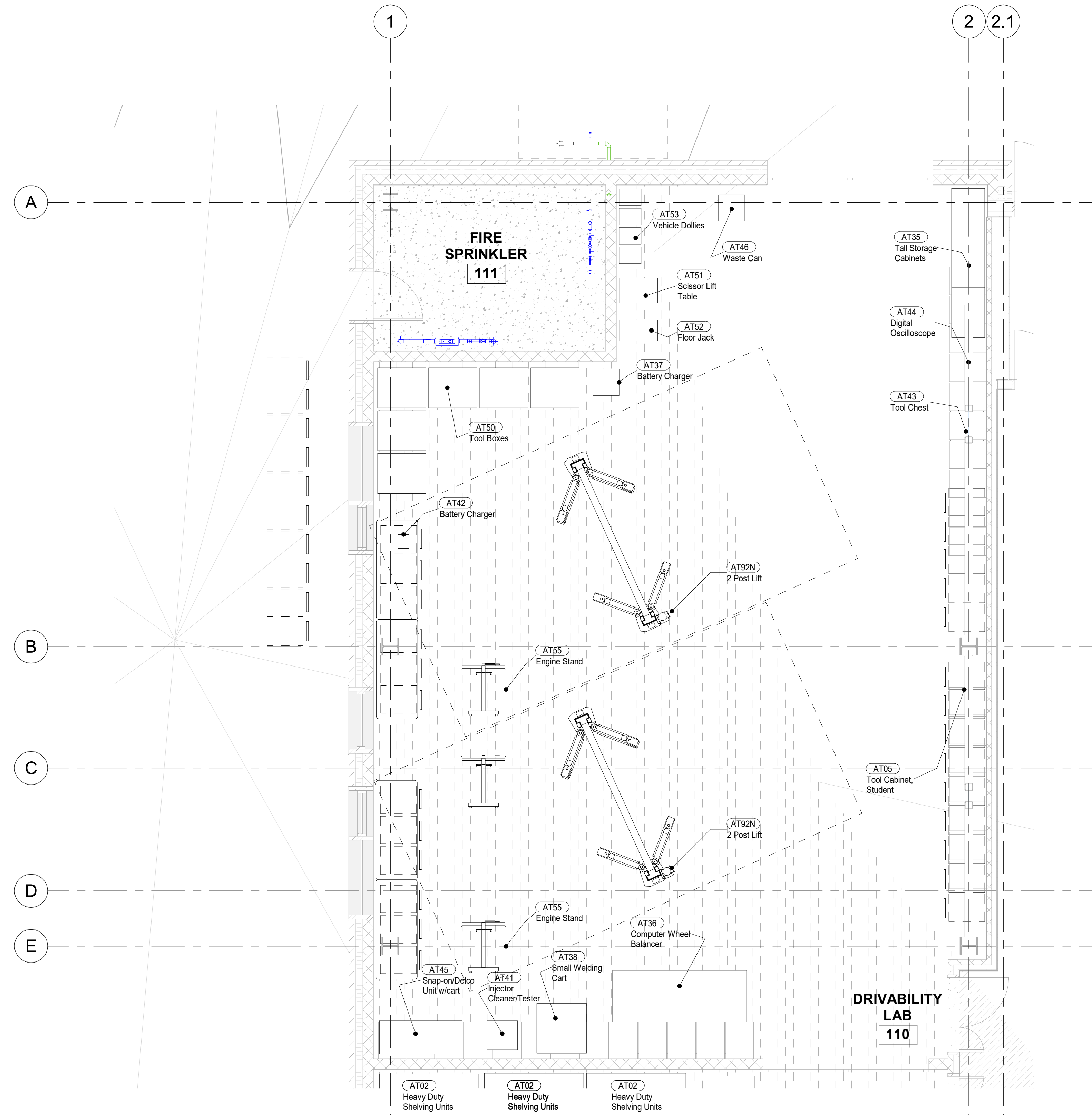
NO.	DESCRIPTION	DATE

PROJECT NO	21905.4
DRAWN BY	PSC
CHECKED BY	Checker
SCALE	1/4" = 1'-0"
DATE	07/15/22

SHEET TITLE  
Transmission - Rm  
109

SHEET NO  
EQ.02

Code	REVIT...	Use f...	Desc	MFG	Model	New...	Existin...	L	D	H	CFM	HP	AMP	V	PH	Connection	Exhaust...	Link	Notes
10.AT.0035	AT35	Existing Yes	Tall Storage Cabinets	-	-	-	3	-	-	-	-	-	-	-	-	-	-	-	-
10.AT.0036	AT36	Existing Yes	Computer Wheel Balancer	FMC	4100	-	1	97	60	36	-	-	-	115	1	-	-	<a href="http://www.snapequip.com/">http://www.snapequip.com/</a>	
10.AT.0037	AT37	Existing Yes	Battery Charger	Snap-On	BC5500	-	1	-	-	-	-	-	-	120	-	-	-	<a href="https://www.welber.edu/US...">https://www.welber.edu/US...</a>	
10.AT.0038	AT38	Existing Yes	Small Welding Cart	-	-	-	1	-	-	-	-	-	-	-	-	-	-	<a href="https://www.weldingoutfitter.com/">https://www.weldingoutfitter.com/</a>	
10.AT.0039	AT55	Existing	Engine Stand	-	-	-	3	37	35	36	-	-	-	-	-	-	-	<a href="https://www.northerntool.com/">https://www.northerntool.com/</a>	
10.AT.0040	-	Existing	Engine Stand	-	-	-	0	37	35	36	-	-	-	-	-	-	-	<a href="https://www.goldscouter.com/">https://www.goldscouter.com/</a>	
10.AT.0041	AT41	Existing Yes	Injector Cleaner/Tester	Launch	601A	-	1	22	21	-	-	-	-	220/110	-	-	-	<a href="https://en.cnlaunch.com/m/">https://en.cnlaunch.com/m/</a>	
10.AT.0042	AT42	Existing Yes	Battery Charger	Schumacher	Electromite 6	-	1	-	-	-	-	-	-	110	-	-	-	<a href="https://www.proweb.com/">https://www.proweb.com/</a>	
10.AT.0043	AT43	Existing Yes	Tool Chest	Snap-On	Classic 78	-	1	55	24	29	-	-	-	-	-	-	-	<a href="https://shop.snapon.com/pr...">https://shop.snapon.com/pr...</a>	
10.AT.0044	AT44	Existing Yes	Digital Oscilloscope	-	MT1665	-	1	-	-	-	-	-	-	110	-	-	-	<a href="https://www.ebay.com/itm/...">https://www.ebay.com/itm/...</a>	
10.AT.0045	AT45	Existing Yes	Snap-on/Delco Unit w/cart	-	-	-	1	-	-	-	-	-	-	-	-	-	-	<a href="https://www.ebay.com/itm/...">https://www.ebay.com/itm/...</a>	
10.AT.0046	AT46	Existing Yes	Waste Can	Justrite	9700	-	1	19	19	24	-	-	-	-	-	-	-	<a href="https://www.justrite.com/gli...">https://www.justrite.com/gli...</a>	
10.AT.0047	AT92N	Existing	Two Post Lift	TEC	TP11KAC	1	2	138	48	144	-	-	20	208-230	1	-	-	<a href="https://www.a-seals.com/">https://www.a-seals.com/</a>	Requesting 2 New Lifts
10.AT.0048	-	Existing	Computer Stations	-	-	-	5	-	-	TBD	-	-	-	110	-	-	-		
10.AT.0049	-	Existing	Work Benches	-	-	-	1	-	-	TBD	-	-	-	-	-	-	-		
10.AT.0050	AT50	Existing Yes	Tool Boxes	-	-	-	6	-	-	TBD	-	-	-	-	-	-	-	<a href="https://www.gibaldindustrial.com/">https://www.gibaldindustrial.com/</a>	
10.AT.0051	AT51	Existing Yes	Scissor Lift Table	-	-	-	1	28	18	30	-	-	-	-	-	-	-	<a href="https://go.harborfreight.com...">https://go.harborfreight.com...</a>	
10.AT.0052	AT52	Existing Yes	Floor Jack	-	-	-	1	28	15	46	-	-	-	-	-	-	-	<a href="https://www.northerntool.com/">https://www.northerntool.com/</a>	
10.AT.0053	AT53	Existing Yes	Vehicle Dollies	-	-	-	4	16	12	3	-	-	-	-	-	-	-	<a href="https://www.northerntool.com/">https://www.northerntool.com/</a>	
10.AT.0001	AT05	Existing Yes	Student Tool Boxes	Snap-On	KRA2007FPB O	0	26	20	26	37	-	-	-	-	-	-	-	<a href="https://shop.snapon.com/pr...">https://shop.snapon.com/pr...</a>	



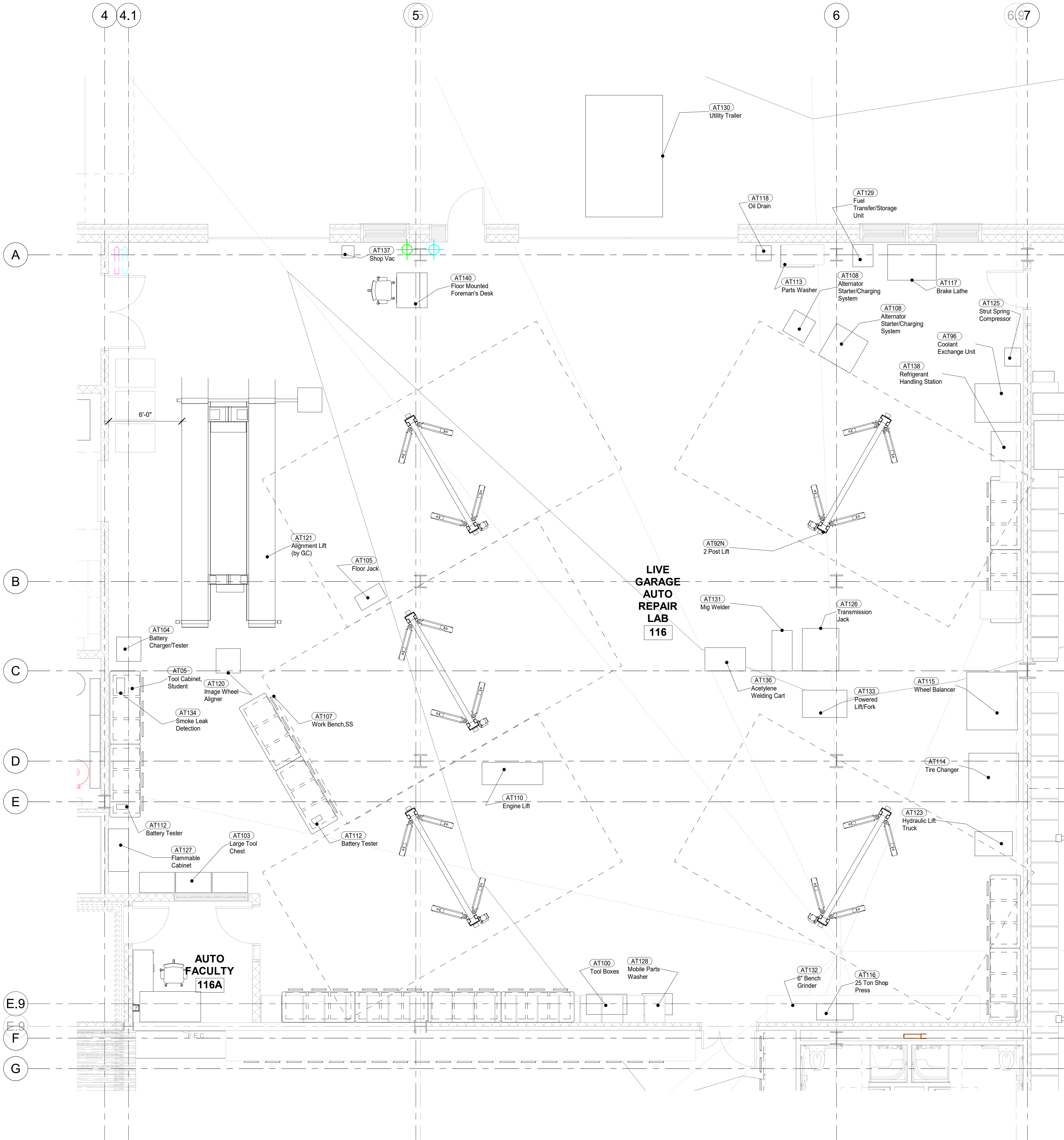
NO.	DESCRIPTION	DATE

PROJECT NO	21905.4
DRAWN BY	Author
CHECKED BY	Checker
SCALE	1/4" = 1'-0"
DATE	07/15/22

SHEET TITLE  
Drivability Lab - Rm  
110

SHEET NO  
EQ.03

Code	REVIT...	Use f...	Desc	MFG	Model	New...	Existin...	L	D	H	CFM	HP	AMP	V	P	Connection	Exhaust...	Web Link	Notes
10.AT.0095	-	Existing Yes	MotorVac Carbon Clean System	SUN	EEFS-100A	-	1	-	-	-	-	-	8	14.5	-	-	-	<a href="https://www.8actionspear.com/">https://www.8actionspear.com/</a>	
10.AT.0096	AT96	Existing Yes	Coolant Exchange Unit	RTI	MCX-2	-	1	45	38	23	-	-	15	12VDC	-	-	-	<a href="https://www.bestbuyauto.com/">https://www.bestbuyauto.com/</a>	
10.AT.0097	-	Existing	Transmission Fluid Exchanger	RTI	ATX-3	-	1	-	-	-	-	-	10	10VDC	-	-	-	<a href="https://www.rti-tech.com/RTITech...">https://www.rti-tech.com/RTITech...</a>	
10.AT.0098	-	Existing	AC Recovery/Recyclin...	Robinair	12134A	-	1	-	-	-	-	-	12	115	-	-	-	<a href="https://www.purplewave.com/">https://www.purplewave.com/</a>	
10.AT.0099	AT05	Existing Yes	Tool Boxes	Snap-On	KRA4107BPO	-	30	20	40	40	-	-	-	-	-	-	-	<a href="https://shop.snapon.com/pr...">https://shop.snapon.com/pr...</a>	
10.AT.0100	AT100	Existing Yes	Tool Boxes	Snap-On	KRA 3810	-	1	40	20	40	-	-	-	-	-	-	-	<a href="https://www.netechclassifi...">https://www.netechclassifi...</a>	
10.AT.0101	-	Existing	Computer Stations	-	-	-	4	-	-	-	-	-	-	110	-	-	-	-	
10.AT.0102	-	Existing	Electric Car	-	-	-	1	-	-	-	-	-	-	-	-	-	-	-	
10.AT.0103	AT103	Existing Yes	Large Tool Chest	Snap-On	KRAS318	-	3	35	20	39	-	-	-	-	-	-	-	<a href="https://shop.snapon.com/pr...">https://shop.snapon.com/pr...</a>	
10.AT.0104	AT104	Existing Yes	Battery Charger/Tester	Snap-On	D-Tac Elite	-	1	-	-	TBD	-	-	-	110	-	-	-	<a href="https://shop.snapon.com/pr...">https://shop.snapon.com/pr...</a>	
10.AT.0105	AT105	Existing Yes	Floor Jack	-	-	-	1	28	15	46	-	-	-	-	-	-	-	<a href="https://go.harborfreight.com...">https://go.harborfreight.com...</a>	
10.AT.0106	-	Existing	Jack Stands	-	-	-	2	-	-	-	-	-	-	-	-	-	-	<a href="https://www.grainger.com/p...">https://www.grainger.com/p...</a>	
10.AT.0107	AT107	Existing Yes	Work Bench w/wise	-	-	-	12	6	-	-	-	-	-	-	-	-	-	-	
10.AT.0108	AT108	Existing Yes	Alternator Starter/Charging...	SUN	VAT-40	-	1	-	-	-	-	-	-	-	-	-	-	<a href="http://www.jrelectronics.ca/...">http://www.jrelectronics.ca/...</a>	
10.AT.0109	-	Existing	Tool Chest	Proto	-	-	1	33	21	46	-	-	-	-	-	-	-	-	
10.AT.0110	AT110	Existing Yes	Engine Lift	-	-	-	1	60	22	89	-	-	-	-	-	-	-	<a href="https://www.tractorsupply.com...">https://www.tractorsupply.com...</a>	
10.AT.0111	AT92N	Existing	Two Post Lift - Asymmetric	Rotary	A10IN6GO	-	6	138	48	141	-	2	-	208-230	-	-	-	<a href="https://rotarylift.com/prod...">https://rotarylift.com/prod...</a>	
10.AT.0112	AT112	Existing Yes	Battery Tester	Snap-On	MT1590	-	1	-	-	-	-	-	-	-	-	-	-	<a href="https://www.ebay.com/p/1...">https://www.ebay.com/p/1...</a>	
10.AT.0113	AT113	Existing Yes	Parts Washer	-	-	-	1	33	21	36	-	-	-	115	-	-	-	<a href="https://www.tp-tools.com/30...">https://www.tp-tools.com/30...</a>	
10.AT.0114	AT114	Existing Yes	Tire Changer	Coats	70X-EH2	1	1	49	48	75	-	-	-	115/230	-	-	-	<a href="http://www.coatsgarage.co...">http://www.coatsgarage.co...</a>	Asking for New Hunter Model
10.AT.0115	AT115	Existing Yes	Wheel Balancer	Coats	1250	1	1	50	57	40	-	-	-	220	1/3	-	-	<a href="https://www.coatsgarage.com...">https://www.coatsgarage.com...</a>	Asking for New Hunter Model
10.AT.0116	AT116	Existing Yes	25 Ton Shop Press	OTC	-	-	1	36	16	70	-	-	-	-	-	-	-	<a href="https://www.otctools.com/...">https://www.otctools.com/...</a>	
10.AT.0117	AT117	Existing	Brake Lathe	Ammco	4000	-	1	48	35	48	-	-	-	115/230	-	-	-	<a href="https://www.ebay.com/itm/...">https://www.ebay.com/itm/...</a>	
10.AT.0118	AT118	Existing Yes	Oil Drain	-	-	-	2	15	15	24	-	-	-	-	-	-	-	<a href="https://www.grainger.com/p...">https://www.grainger.com/p...</a>	
10.AT.0119	-	Existing	Battery Load Tester	Snap-On	MT3750 AVR	-	1	-	-	-	-	-	-	-	-	-	-	<a href="https://www.arteckollision.com...">https://www.arteckollision.com...</a>	
10.AT.0120	AT120	Existing Yes	Image Wheel Aligner	Hofmann	Geoliner 680	-	1	113	24	24	-	-	6/3	115-230	1	-	-	<a href="http://www.completechydra...">http://www.completechydra...</a>	
10.AT.0121	AT121	Existing Yes	Alignment Rack Lift	Rotary	YA12	-	1	260	88	69	-	-	-	26-29	208-230	-	-	<a href="https://www.mannualsite.com...">https://www.mannualsite.com...</a>	100-120psi 20 CFM
10.AT.0122	-	Existing	Rolling Jack	Rotary	RJ6000Z	-	2	-	-	-	-	-	-	-	-	-	-	<a href="https://rotarylift.com/prod...">https://rotarylift.com/prod...</a>	
10.AT.0123	AT123	Existing Yes	Hydraulic Lift Truck	Presto	-	-	1	37	24	71	-	-	-	-	-	-	-	<a href="https://prestolifts.com/prod...">https://prestolifts.com/prod...</a>	
10.AT.0124	-	Existing	Battery Charger	Snap-On	250	-	1	-	-	-	-	-	-	-	-	-	-	<a href="https://www.kbid.com/auct...">https://www.kbid.com/auct...</a>	
10.AT.0125	AT125	Existing Yes	Strut Spring Compressor	Branick	7200	-	1	16	18	48	-	-	-	-	-	-	-	<a href="https://www.branick.com/w...">https://www.branick.com/w...</a>	
10.AT.0126	AT126	Existing Yes	Transmission Jack	NLE	7917100	-	1	36	42	44	-	-	-	-	-	-	-	<a href="https://www.napaonline.com...">https://www.napaonline.com...</a>	
10.AT.0127	AT127	Existing Yes	Flammable Cabinet	Wilray Metal Fab	-	-	1	20	42	61	-	-	-	-	-	-	-	<a href="https://weldingmart.com/40...">https://weldingmart.com/40...</a>	
10.AT.0128	AT128	Existing Yes	Mobile Parts Washer	-	-	-	1	30	21	37	-	-	-	120	-	-	-	<a href="https://www.2gro.com/web...">https://www.2gro.com/web...</a>	
10.AT.0129	AT129	Existing Yes	Fuel Transfer/Storage...	Goodall	ProTec 53-526	-	1	20	22	42	-	-	-	-	-	-	-	<a href="https://www.1poisource.com...">https://www.1poisource.com...</a>	
10.AT.0131	AT131	Existing Yes	Mig Welder	Millermatic	140	-	1	20	40	30	-	-	2	115	1	-	-	<a href="https://www.weldingsupplies.com...">https://www.weldingsupplies.com...</a>	
10.AT.0132	AT132	Existing Yes	6" Bench Grinder	Jet	JBG-6A	-	1	17	10	36	-	-	5	115	-	-	-	<a href="https://www.jettools.com/u...">https://www.jettools.com/u...</a>	
10.AT.0133	AT133	Existing Yes	Powered Lift/Fork	Big Joe	-	-	1	44	27	72	-	-	-	12VDC	-	-	-	<a href="https://www.grainger.com/p...">https://www.grainger.com/p...</a>	
10.AT.0134	AT134	Existing Yes	Smoke Leak Detection	VacuTec	EVAPro 2000e	-	1	8	15	15	-	-	-	12VDC	-	-	-	<a href="https://www.1poisource.com...">https://www.1poisource.com...</a>	
10.AT.0135	-	Existing	Battery Charger	Die Hard	-	-	1	-	-	-	-	-	-	110	-	-	-	<a href="https://www.sashomestow...">https://www.sashomestow...</a>	
10.AT.0136	AT136	Existing Yes	Acetylene Welding Cart	-	-	-	1	40	23	30	-	-	-	-	-	-	-	<a href="https://www.airgas.com/pr...">https://www.airgas.com/pr...</a>	
10.AT.0137	AT137	Existing Yes	Shop Vac	Snap-On	-	-	1	12	12	24	-	-	-	110v	-	-	-	<a href="https://www.ebay.com/itm/...">https://www.ebay.com/itm/...</a>	
10.AT.0138	AT138	Existing Yes	Refrigerant Handling Station	RTI	RH5780	-	1	29	29	47	-	-	12	115	-	-	-	<a href="https://www.servicelutio...">https://www.servicelutio...</a>	
10.AT.0140	AT140	New	Foremans Desk	-	-	-	1	-	-	-	-	-	-	-	-	-	-	-	

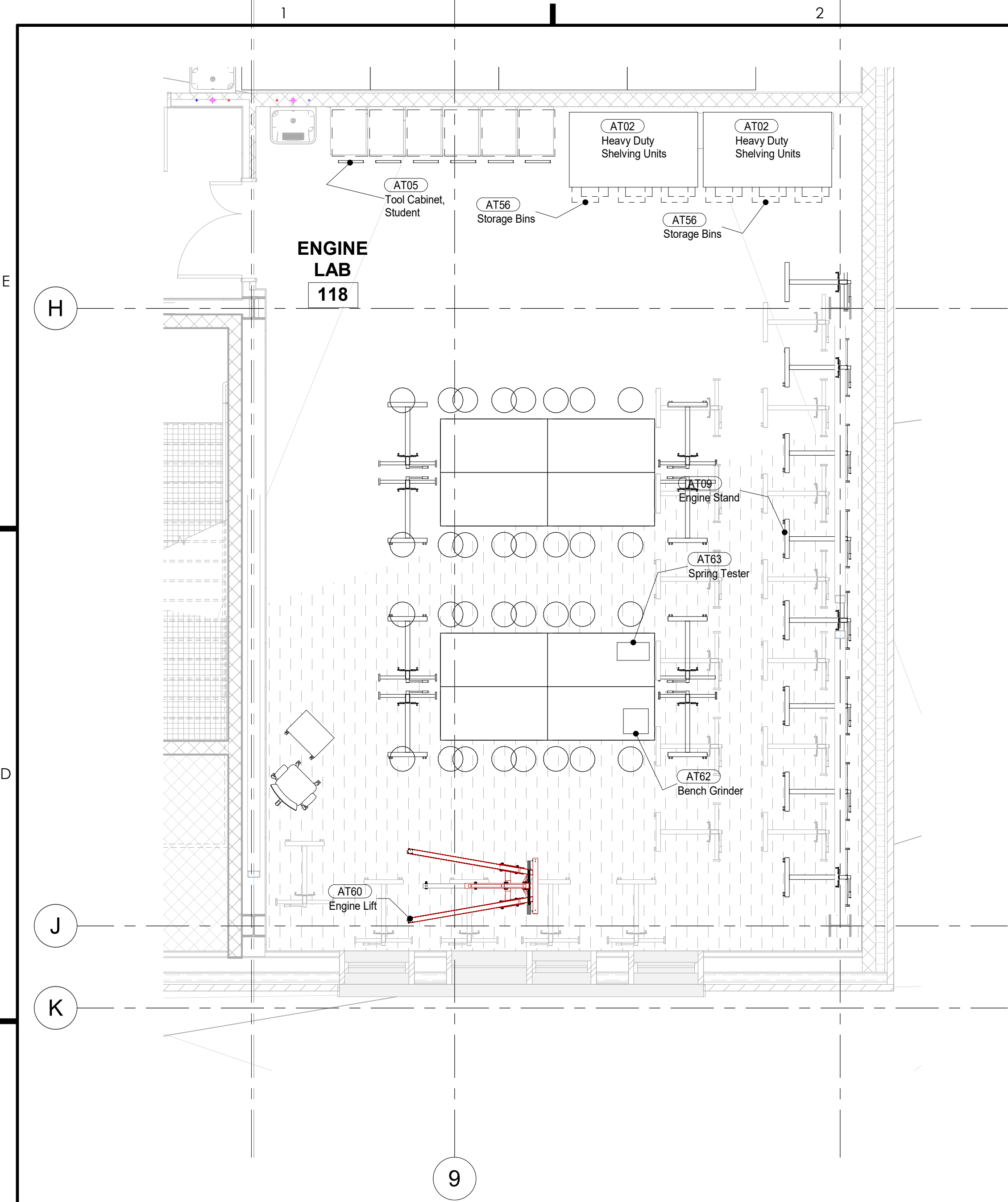


NO.	DESCRIPTION	DATE

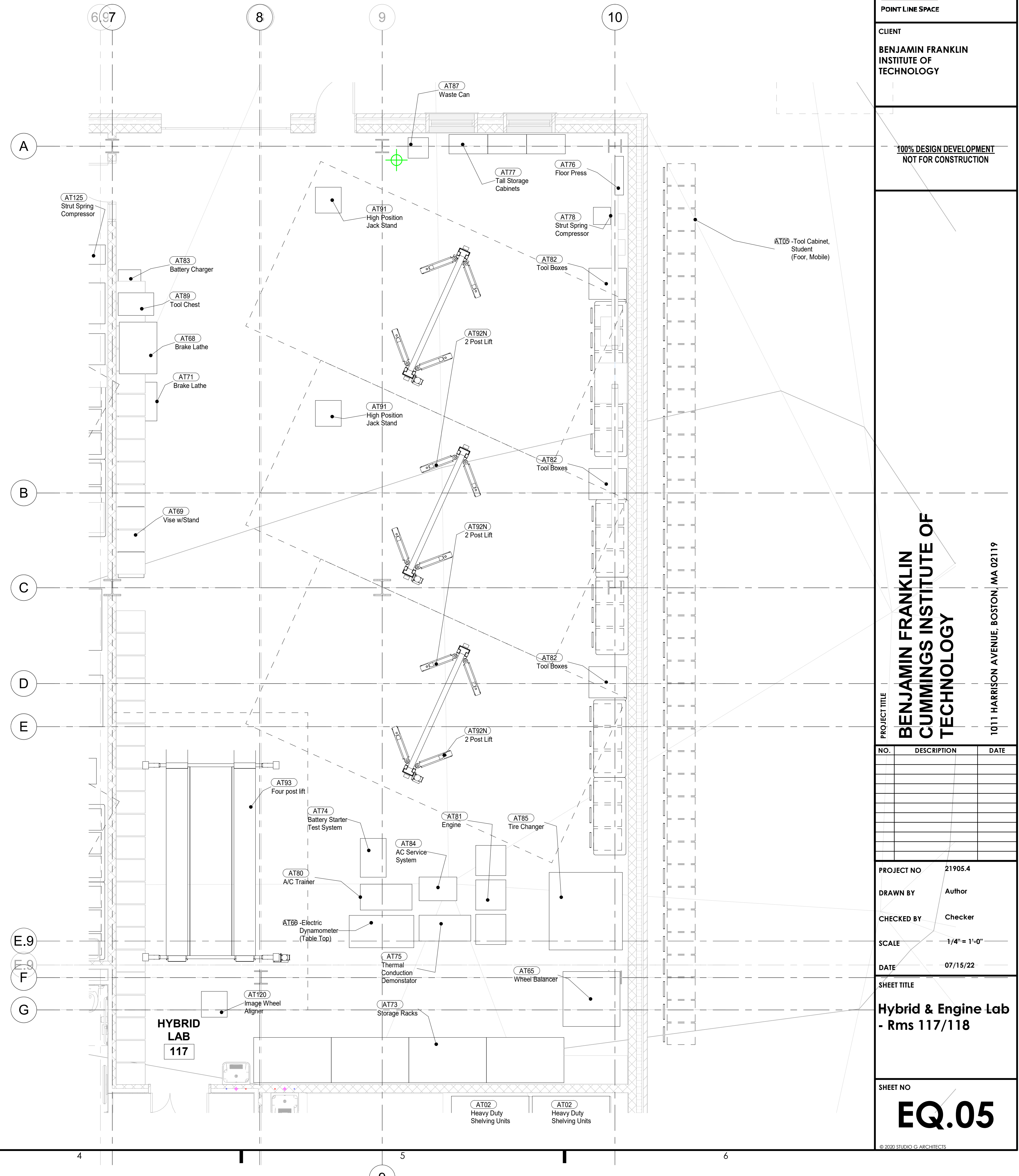
PROJECT NO	21905.4
DRAWN BY	Author
CHECKED BY	Checker
SCALE	1/4" = 1'-0"
DATE	07/15/22

SHEET TITLE  
LIVE GARAGE -  
REPAIR LAB - Rm 116

SHEET NO  
EQ.04



Code	REVIT TAG	Use for Project	Desc	MFG	Model	New Quantity	Existing Quantity	L	D	H	CFM	HP	AMP	V	Ph	Connection	Exhaust Port Size	Web Link	Notes
10.AT.0054	AT09	Existing	Engine Stands	OTC Stinger	2012	-	15	36	32	24	-	-	-	-	-	-	-	<a href="https://www.summitracinc.com">https://www.summitracinc.com</a>	
10.AT.0055	-	Existing	Engine Stands	OTC Stinger	2010A	-	15	34	33	24	-	-	-	-	-	-	-	<a href="https://www.summitracinc.com">https://www.summitracinc.com</a>	
10.AT.0056	AT56	Existing Yes	Storage Bins	-	-	-	12	-	-	-	-	-	-	-	-	-	-		
10.AT.0057	-	Existing	Computer Stations	-	-	-	5	-	-	-	-	-	-	110	-	-	-	<a href="https://shop.snapon.com/pr...">https://shop.snapon.com/pr...</a>	
10.AT.0058	AT05	Existing Yes	Tool Boxes	Snap-On	KRA4107FBPO	-	2	20	40	40	-	-	-	-	-	-	-		
10.AT.0059	-	Existing	Work Benches	-	-	-	8	9	-	-	-	-	-	-	-	-	-	<a href="https://www.tractorsupply.com">https://www.tractorsupply.com</a>	
10.AT.0060	AT60	Existing Yes	Engine Lift	-	-	-	1	60	22	89	-	-	-	-	-	-	-		
10.AT.0061	-	Existing Yes	Vise	-	-	-	1	-	-	-	-	-	-	-	-	-	-		
10.AT.0062	AT63	Existing Yes	Bench Grinder	Central Machinery	39797	-	1	14	14	11	-	.5	110	-	-	-	-	<a href="https://www.harborfreight.com">https://www.harborfreight.com</a>	
10.AT.0063	AT63	Existing Yes	Spring Tester	Rimac	-	-	1	-	-	-	-	-	-	-	-	-	-	<a href="https://www.summitracinc.com">https://www.summitracinc.com</a>	
10.AT.0002	AT02	Existing Yes	Heavy Duty Shelving Units	-	-	-	2	0	-	-	-	-	-	-	-	-	-		



Code	REVIT...	Use...	Desc	MFG	Model	New...	Existin...	L	D	H	CFM	HP	AMP	V	P	Connection	Exhaust...	Web Link	Notes
10.AT.0064	-	Existing	Pallet Jack	Lift-Rite	-	-	1	33	48	48	-	-	-	-	-	-	-	<a href="https://www.mscdirect.com/">https://www.mscdirect.com/</a>	
10.AT.0065	AT65	NO	Wheel Balancer	Accuturn	1550	-	1	53	51	60	-	1	-	220	-	-	-	<a href="http://www.accuturn.com/">http://www.accuturn.com/</a>	
10.AT.0066	AT66	Existing Yes	Electric Dynamometer	Megatech	DG-01	-	1	-	-	-	-	-	-	110	-	-	-		
10.AT.0067	AT67	Existing Yes	Swing Arm Tire Changer	Accuturn	3265	-	1	38	30	74	100-170 psi @5cfm	1	20	120	-	-	-	<a href="http://www.accuturn.com/">http://www.accuturn.com/</a>	
10.AT.0068	AT68	Existing Yes	Brake Lathe	Ammco	4000	-	1	48	35	48	-	-	5-1	115/220	-	-	-	<a href="https://www.ebay.com/itm/">https://www.ebay.com/itm/</a>	
10.AT.0069	AT69	Existing Yes	Vise w/Stand	Baldor/Central Forge	63189	-	4	-	-	-	-	-	-	-	-	-	-	<a href="https://go.harborfreight.com/">https://go.harborfreight.com/</a>	
10.AT.0070	-	Existing	Computer Station	-	-	-	4	-	-	TBD	-	-	-	110	-	-	-		
10.AT.0071	AT71	Existing Yes	Brake Lathe	Pro-Cut	On-Car	-	1	-	-	-	-	1	-	120	1	-	-	<a href="https://www.pocutusa.com/">https://www.pocutusa.com/</a>	
10.AT.0072	-	Existing Yes	Computer Cart w/Scanner	-	-	-	1	-	-	-	-	-	-	-	-	-	-		
10.AT.0073	AT73	Existing Yes	Storage Racks	-	-	-	4	-	-	-	-	-	-	-	-	-	-		
10.AT.0074	AT74	Existing Yes	Battery Starter Test System	BEAR	ARBST II	-	1	-	-	-	-	-	-	-	-	-	-	<a href="https://www.rebuiltsheds.com/">https://www.rebuiltsheds.com/</a>	
10.AT.0075	AT75	Existing Yes	Thermal Conduction Demonstrator	Hampden	H-6862-CDL	-	1	-	-	-	-	-	-	120	1	-	-	<a href="https://www.bampden.com/">https://www.bampden.com/</a>	Water - 20 Gallons per hour at 15psi
10.AT.0076	AT76	Existing Yes	Floor Press	AF&F	820A	-	1	8	27	61	-	-	-	-	-	-	-	<a href="https://www.asedals.com/">https://www.asedals.com/</a>	
10.AT.0077	AT77	Existing Yes	Tall Storage Cabinets	-	-	-	3	-	-	-	-	-	-	-	-	-	-		
10.AT.0078	AT78	Existing Yes	Strut Spring Compressor	Branick	7400	-	1	16	16	42	-	-	-	-	-	-	-	<a href="https://www.branick.com/w...">https://www.branick.com/w...</a>	
10.AT.0079	-	Existing	Engine Stand	-	-	-	1	34	34	43	-	-	-	-	-	-	-	<a href="https://www.toodiscouter.com/">https://www.toodiscouter.com/</a>	
10.AT.0080	AT80	Yes New	A/C Trainer	Hampden	-	-	1	-	-	TBD	-	-	-	120	-	-	-		
10.AT.0081	AT81	Existing Yes	Engines	-	-	-	3	-	-	TBD	-	-	-	-	-	-	-		
10.AT.0082	AT82	Existing Yes	Tool Boxes	-	-	-	3	-	-	TBD	-	-	-	-	-	-	-		
10.AT.0083	AT83	Existing Yes	Battery Charger	Snap On	EEBC500	-	1	21	17	31	-	-	-	120	-	-	-	<a href="https://shop.snapon.com/pr...">https://shop.snapon.com/pr...</a>	
10.AT.0084	AT84	Yes New	AC Service System	RTI	RH5980	-	1	35	22	50	-	3/8	12/6	120/230	-	-	-	<a href="https://www.repaup.com/R...">https://www.repaup.com/R...</a>	
10.AT.0085	AT85	Existing Yes	Tire Changer	Hofman	Monty 1565	1	1	68	72	85	100-170 psi @5cfm	1	-	230	-	-	-	<a href="https://www.bestbuy.com/">https://www.bestbuy.com/</a>	Asking for new Hunter Models
10.AT.0086	AT65	Existing Yes	Wheel Balancer	Snap On	WB265	1	1	44	40	68	AIR	-	-	110/120	1	-	-	<a href="https://www.snaponequip.com/">https://www.snaponequip.com/</a>	Asking for new Hunter Models
10.AT.0087	AT87	Existing Yes	Waste Can	Justrite	9700	-	1	19	19	24	-	-	-	-	-	-	-	<a href="https://www.justrite.com/oil...">https://www.justrite.com/oil...</a>	
10.AT.0088	AT120	Existing Yes	Wheel Alignment Machine	Hunter	PA130	-	1	32	25	68	-	-	10	100-240	1	-	-	<a href="https://www.hunter.com/gl...">https://www.hunter.com/gl...</a>	
10.AT.0089	AT89	Existing Yes	Tool Chest	Snap On	-	-	1	33	21	60	-	-	-	-	-	-	-		
10.AT.0090	AT90	Existing Yes	Wheel Balancer	Coates	775	-	1	35	20	40	-	-	-	115	60hz	-	-	<a href="https://www.coatesgarage.com/">https://www.coatesgarage.com/</a>	
10.AT.0091	AT91	Existing Yes	High Position Jack Stand	-	-	-	2	-	-	-	-	-	-	-	-	-	-	<a href="https://www.orthertool.com/">https://www.orthertool.com/</a>	
10.AT.0092	AT92N	Existing	Two Post Lift - Asymmetric	Rotary	A10ING60	2	3	138	48	141	-	2	208-230	-	-	-	-	<a href="https://rotarylift.com/prod...">https://rotarylift.com/prod...</a>	Should be Hybrid Lifts
10.AT.0093	AT93	Existing	Four Post Lift	Rotary	ARO14N000	-	1	141	254	80	-	2	208-230	-	-	-	-	<a href="https://rotarylift.com/prod...">https://rotarylift.com/prod...</a>	Should be Hybrid Lifts
10.AT.0094	-	Existing	Work Benches w/vise	-	-	-	6	4	-	-	-	-	-	-	-	-	-		

NO.	DESCRIPTION	DATE

Code	REVIT TAG	Use for Project	Desc	MFG	Model	New Quantity	Existing Quantity	L	D	H	CFM	HP	AMP	V	Ph	Connection	Exhaust Port Size	Web Link
10.EN.0011	-	Existing Yes	Soldering Station	-	-	-	1	-	-	-	-	-	-	120	-	-	-	-
10.EN.0012	-	Existing Yes	DC Power Supply	MPJA	14600	-	16	-	-	-	-	-	-	110-220	-	-	-	<a href="https://www.mpja.com/download...">https://www.mpja.com/download...</a>
10.EN.0013	-	Existing Yes	Arbitrary Wave Form Generator	Agilent	3320A	-	16	-	-	-	-	-	-	100-240	-	-	-	<a href="https://www.keysight.com/us/en...">https://www.keysight.com/us/en...</a>
10.EN.0014	-	Existing Yes	Analog Oscilloscope	GW Instek	GOS-622G	-	16	-	-	-	-	-	-	100/120/220/230	-	-	-	<a href="https://www.gwinstek.com/en_g...">https://www.gwinstek.com/en_g...</a>
10.EN.0015	-	Existing Yes	Digital Storage Oscilloscope	BK Precision	2530B	-	16	-	-	-	-	-	-	100-240	-	-	-	<a href="https://www.bkprecision.com/p...">https://www.bkprecision.com/p...</a>
10.EN.0016	-	Existing Yes	Digital Multimeter	Agilent	34405A	-	16	-	-	-	-	-	-	100/120/220/230/240	-	-	-	<a href="https://www.keysight.com/us/e...">https://www.keysight.com/us/e...</a>
10.EN.0017	-	Existing Yes	Electronics Trainer	E&L Instruments	CADET D304957	-	16	-	-	-	-	-	-	120	-	-	-	<a href="https://www.ebay.com/itm/124...">https://www.ebay.com/itm/124...</a>
10.EN.0018	-	Existing Yes	Digital/Analog Trainer	Elenco	500/700	-	16	-	-	-	-	-	-	120	-	-	-	<a href="https://www.elenco.com/wp-co...">https://www.elenco.com/wp-co...</a>
10.EN.0019	-	Existing Yes	Desktop PC	-	-	-	16	-	-	-	-	-	-	120	-	-	-	-
10.EN.0020	-	Existing Yes	Teacher Station	-	-	-	1	-	-	-	-	-	-	-	-	-	-	-
10.EN.0021	-	Existing Yes	Tall Storage	-	-	-	9	-	-	-	-	-	-	-	-	-	-	-

Code	REVIT TAG	Use for Project	Desc	MFG	Model	New Quantity	Existing Quantity	L	D	H	CFM	HP	AMP	V	Ph	Connection	Exhaust Port Size	Web Link	Notes
10.EN.0011	-	Existing Yes	Soldering Station	-	-	-	1	-	-	-	-	-	-	120	-	-	-	-	-
10.EN.0012	-	Existing Yes	DC Power Supply	MPJA	14600	-	16	-	-	-	-	-	-	110-220	-	-	-	<a href="https://www.mpja.com/download...">https://www.mpja.com/download...</a>	-
10.EN.0013	-	Existing Yes	Arbitrary Wave Form Generator	Agilent	3320A	-	16	-	-	-	-	-	-	100-240	-	-	-	<a href="https://www.keysight.com/us/en...">https://www.keysight.com/us/en...</a>	-
10.EN.0014	-	Existing Yes	Analog Oscilloscope	GW Instek	GOS-622G	-	16	-	-	-	-	-	-	100/120/220/230	-	-	-	<a href="https://www.gwinstek.com/en_g...">https://www.gwinstek.com/en_g...</a>	-
10.EN.0015	-	Existing Yes	Digital Storage Oscilloscope	BK Precision	2530B	-	16	-	-	-	-	-	-	100-240	-	-	-	<a href="https://www.bkprecision.com/p...">https://www.bkprecision.com/p...</a>	-
10.EN.0016	-	Existing Yes	Digital Multimeter	Agilent	34405A	-	16	-	-	-	-	-	-	100/120/220/230/240	-	-	-	<a href="https://www.keysight.com/us/e...">https://www.keysight.com/us/e...</a>	-
10.EN.0017	-	Existing Yes	Electronics Trainer	E&L Instruments	CADET D304957	-	16	-	-	-	-	-	-	120	-	-	-	<a href="https://www.ebay.com/itm/124...">https://www.ebay.com/itm/124...</a>	-
10.EN.0018	-	Existing Yes	Digital/Analog Trainer	Elenco	500/700	-	16	-	-	-	-	-	-	120	-	-	-	<a href="https://www.elenco.com/wp-co...">https://www.elenco.com/wp-co...</a>	-
10.EN.0019	-	Existing Yes	Desktop PC	-	-	-	16	-	-	-	-	-	-	120	-	-	-	-	-
10.EN.0020	-	Existing Yes	Teacher Station	-	-	-	1	-	-	-	-	-	-	-	-	-	-	-	-
10.EN.0021	-	Existing Yes	Tall Storage	-	-	-	7	-	-	-	-	-	-	-	-	-	-	-	-

Code	Use for Project	Desc	MFG	Model Number	New Quantity	Existing Quantity	L	D	H	CFM	HP	A	V	P	Connection	Exhaust Port Size	Web Link	Notes	
10.ET.0001	Existing	Maze	-	-	-	-	-	-	-	-	-	-	-	-	-	-	-	-	-
10.EE.0002	Existing Yes	Lab Stations	-	-	-	11	60	30	72	-	-	-	110	-	-	-	-	<a href="https://gokimco.com/produ...">https://gokimco.com/produ...</a>	-
10.EE.0003	Existing Yes	Bench Station	-	-	-	6	-	-	-	-	-	-	110	-	-	-	-	-	-
10.EE.0004	Existing Yes	Desktop computers	-	-	-	16	-	-	-	-	-	-	110	-	-	-	-	-	-
10.EE.0005	Existing Yes	Monitors	-	-	-	32	-	-	-	-	-	-	110	-	-	-	-	-	-
10.EE.0006	Existing Yes	Digital Multimeters	BK Precision	2831D	-	16	-	-	-	-	10	110/220	-	-	-	-	-	<a href="https://www.bkprecision.co...">https://www.bkprecision.co...</a>	-
10.EE.0007	Existing Yes	Analog Oscilloscope	BK Precision	2522B	-	16	-	-	-	-	-	110/125/220/240	-	-	-	-	-	<a href="https://www.bkprecision.co...">https://www.bkprecision.co...</a>	-
10.EE.0008	Existing Yes	Digital Storage Oscilloscope	BK Precision	2530B	-	16	-	-	-	-	-	100-240	-	-	-	-	-	<a href="https://www.bkprecision.co...">https://www.bkprecision.co...</a>	-
10.EE.0009	Existing Yes	DDS Function Generator	GW Instek	SFG-1003	-	16	-	-	-	-	-	110/220/240	-	-	-	-	-	<a href="https://www.gwinstek.com/...">https://www.gwinstek.com/...</a>	-
10.EE.0010	Existing Yes	DC Power Supply	ABRA	AB-3300	-	16	-	-	-	-	-	115	-	-	-	-	-	<a href="https://abra-elctronics.co...">https://abra-elctronics.co...</a>	-
10.EE.0011	Existing Yes	Multi Output DC Power Supply	MPJA	9623PS	-	16	-	-	-	-	-	110	-	-	-	-	-	<a href="https://www.mpja.com/dow...">https://www.mpja.com/dow...</a>	-
10.EE.0012	Existing Yes	Electronics Trainer	E&L Instruments	CADET D304957	-	16	-	-	-	-	-	110	-	-	-	-	-	<a href="https://www.ebay.com/itm/...">https://www.ebay.com/itm/...</a>	-
10.EE.0013	NO	Mobile Server Rack	-	-	-	1	36	72	36	-	-	-	110	-	-	-	-	-	-
10.EE.0014	Existing Yes	Power and Control Electronic Trainer	Amatrol	990-ELE1	-	1	-	-	-	-	-	220	-	-	-	-	-	<a href="https://amatrol.com/coursep...">https://amatrol.com/coursep...</a>	-
10.EN.0021	Existing Yes	Tall Storage	-	-	-	6	-	-	-	-	-	-	-	-	-	-	-	-	-

Code	REVIT...	Use f...	Desc	MFG	Model...	New...	Existin...	L	D	H	CFM	HP	AMP	V	Phase	Connection	Exhaust...	Web Link	Notes
10.ET.0007	ET07	Existing Yes	Solar/Wind Energy Trainer	LabVolt	46120	-	6	36	36	72	TBD	TBD	TBD	TBD	TBD	-	-	<a href="https://labvolt.festo.com/so...">https://labvolt.festo.com/so...</a>	Confirm ELEC
10.ET.0018	ET18	Yes	Alternative Energy Learning System(Wind/Solar)	Amatrol	-	-	-	60	36	54	TBD	TBD	TBD	TBD	TBD	-	-	<a href="https://amatrol.com/coursep...">https://amatrol.com/coursep...</a>	Utility System Grid Interface (supplied by customer for full functionality) OPTIONAL
10.ET.0019	ET19	Yes	Solar PV Array Station	Amatrol	85-SPA1	-	-	60	36	54	TBD	TBD	TBD	120	1	-	-	<a href="https://amatrol.com/coursep...">https://amatrol.com/coursep...</a>	Accessory to 10.ET.0018
10.ET.0017	ET17	Yes	Turbine Generator Control Troubleshooting Learning...	Amatrol	950-TGCL1	-	1	96	28	72	TBD	TBD	TBD	208	3	-	-	<a href="https://tech-lab.pro/produ...">https://tech-lab.pro/produ...</a>	Confirm ELEC
10.ET.0016	ET16	Yes	Turbine Technologies WindLab Electrical Generation System	Turbine Technologies	-	-	1	67	45	76	TBD	TBD	15	208	1	-	-	<a href="https://www.turbine-technol...">https://www.turbine-technol...</a>	Confirm ELEC
10.ET.00??	ET19A	Yes	Solar PV sun simulator	Amatrol	85-SPS1	-	-	-	-	-	TBD	TBD	TBD	TBD	TBD	-	-	<a href="https://amatrol.com/coursep...">https://amatrol.com/coursep...</a>	Accessory to 10.ET.0018



studio  
ARCHITECTS  
The Brewery  
179 Boylston Street  
Jamaica Plain, MA 02130  
617-524-5558  
617-524-5544

STAMP

POINT LINE SPACE  
Point Line Space, Inc.  
75 Lowell Street  
Carlsle, MA 01741  
T. 617.314.7501

CIENT  
BENJAMIN FRANKLIN  
INSTITUTE OF  
TECHNOLOGY

100% DESIGN DEVELOPMENT  
NOT FOR CONSTRUCTION

PROJECT TITLE  
BENJAMIN FRANKLIN  
CUMMINGS INSTITUTE OF  
TECHNOLOGY  
1011 HARRISON AVENUE, BOSTON, MA 02119

NO.	DESCRIPTION	DATE

PROJECT NO 21905.4  
DRAWN BY Author  
CHECKED BY Checker  
SCALE 1/4" = 1'-0"  
DATE 07/15/22

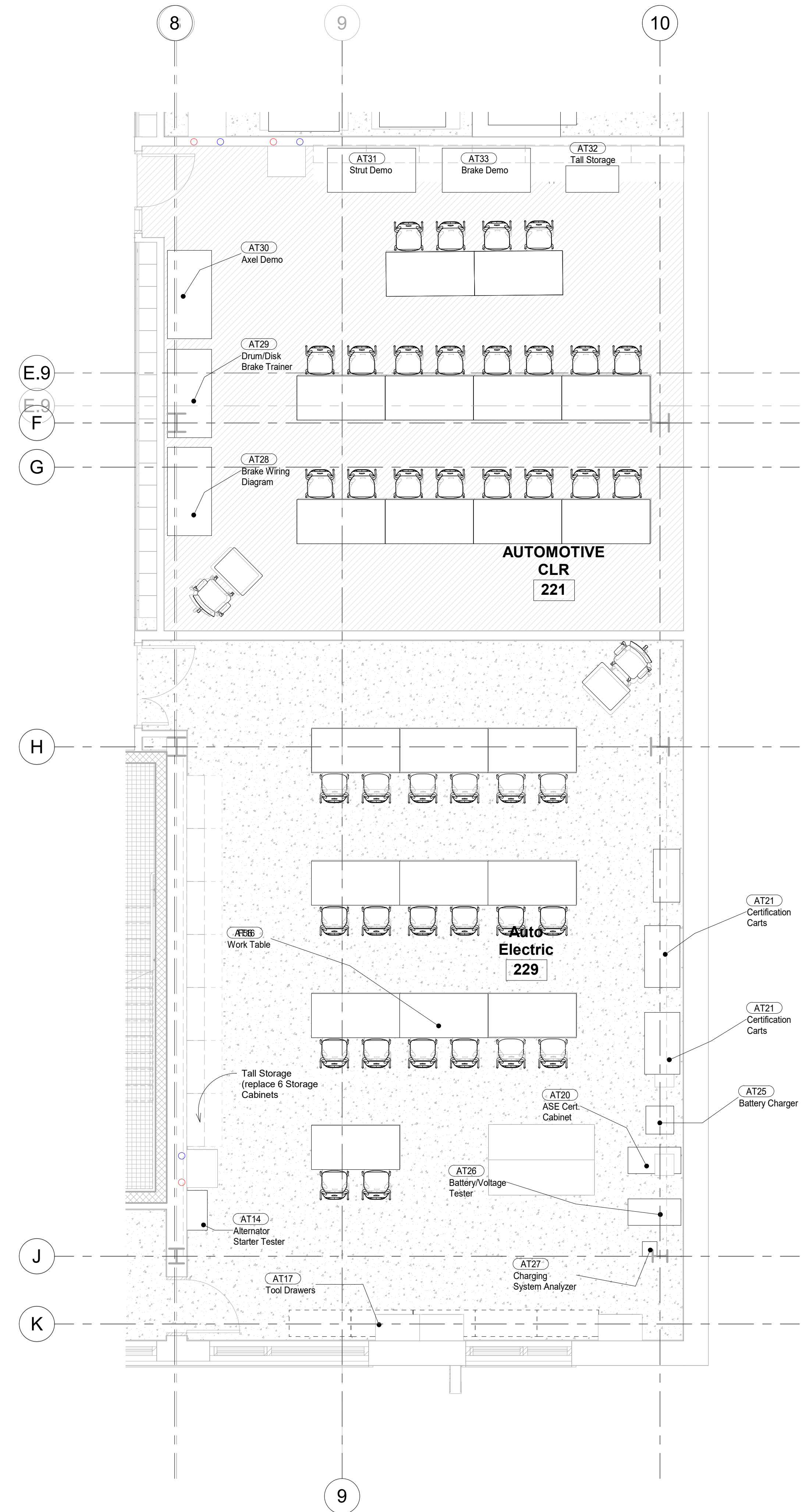
SHEET TITLE  
Sustainability/  
Electrical - Rms  
213/214/218/219

SHEET NO  
EQ.06

07.15.22 1:27:16 PM

Code	REVIT TAG	Use for Project	Desc	MFG	Model	New Qty	Exist Qty	L	D	H	W	CFM	HP	AMP	V	Ph	Connection	Exhaust Port Size	Link	Notes
10.AT.0014	AT14	Existing Yes	Alternator Starter Tester	Associated	8501	0	1	14	27	17	-	-	1	16	220	-	-	-	<a href="https://www.togisource.co...">https://www.togisource.co...</a>	
10.AT.0015		Existing No	Portable Battery Charger	Marquette	32-135	0	1	-	-	-	-	-	-	13	120	1	-	-	<a href="https://bid.orbi.tbid.com/lots...">https://bid.orbi.tbid.com/lots...</a>	
10.AT.0016		Existing Yes	Workbench	-	-	6	6	-	-	-	-	-	-	-	-	-	-	-		
10.AT.0017	AT17	Existing Yes	Tool Drawers	Equipto	-	0	5	-	-	-	-	-	-	-	-	-	-	-	<a href="https://www.equipto.com/s...">https://www.equipto.com/s...</a>	
10.AT.0018		Existing Yes	Bench Vise	Alltrade	299-V-1	0	1	-	-	-	-	-	-	-	-	-	-	-	<a href="https://www.alltrade.com/s...">https://www.alltrade.com/s...</a>	
10.AT.0019		Existing TBD	Hybrid Vehicle Trainer	LI Create	-	0	1	36	7	24	-	-	-	-	120	1	-	-	<a href="https://www.licreate.com/u...">https://www.licreate.com/u...</a>	
10.AT.0020	AT20	Existing Yes	ASE Cert. Cabinet	-	-	0	1	-	-	-	-	-	-	1.50	120-240	-	-	-		
10.AT.0021		Existing Yes	Certification Carts	Snap-On	-	0	2	-	-	-	-	-	-	-	-	-	-	-		
10.AT.0022		Existing Yes	Battery Storage	-	-	0	1	-	-	-	-	-	-	-	-	-	-	-		
10.AT.0023		Existing No	Tall Storage Units	-	-	6	6	-	-	-	-	-	-	-	-	-	-	-		
10.AT.0024		Existing No	Battery Tester	Auto Meter	SB-7	0	1	-	-	-	-	-	-	-	-	-	-	-		
10.AT.0025	AT25	Existing Yes	Battery Tester/Charger	Snap-On	MT1552	0	1	-	-	-	-	-	-	-	-	-	-	-	<a href="https://ridgecrestestimators.com...">https://ridgecrestestimators.com...</a>	
10.AT.0026	AT26	Existing Yes	Battery/Voltage Tester	Snap-On	MT 539	0	1	-	-	-	-	-	-	-	-	-	-	-	<a href="https://www.biron.com/Lo...">https://www.biron.com/Lo...</a>	
10.AT.0027	AT27	Existing Yes	Charging System Analyzer	MAC	BCH3	0	1	-	-	-	-	-	-	-	-	-	-	-	<a href="http://www.autometer.com...">http://www.autometer.com...</a>	

Code	REVIT TAG	Use for Project	Desc	MFG	Model	New Qty	Existing Qty	L	D	H	W	CFM	HP	AMP	V	Ph	Connection	Exhaust Port Size	Link	Notes
10.AT.0028	AT28	Existing Yes	Brake Wiring Diagram	-	-	0	1	-	-	-	-	-	-	-	-	-	-	-		
10.AT.0029	Aat29	Existing Yes	Drum/Disk Brake Trainer	Atech Training	400-4W	0	1	-	-	-	-	-	-	-	-	-	-	-	<a href="https://www.amteckcompany.com...">https://www.amteckcompany.com...</a>	
10.AT.0030	AT30	Existing Yes	Axel Demo	-	-	0	1	-	-	-	-	-	-	-	-	-	-	-		
10.AT.0031	AT31	Existing Yes	Strut Demo	-	-	0	1	-	-	-	-	-	-	-	-	-	-	-		
10.AT.0032	AT32	Existing Yes	Tall Storage	-	-	0	2	-	-	-	-	-	-	-	-	-	-	-		
10.AT.0033	AT33	Existing Yes	Brake Demo	-	-	0	1	-	-	-	-	-	-	-	-	-	-	-		
10.AT.0034		Existing Yes	Display Boards	-	-	0	1	-	-	-	-	-	-	-	-	-	-	-		



studio  
ARCHITECTS  
The Brewery  
179 Boylston Street  
Jamaica Plain, MA 02130  
T 617-524-5558  
F 617-524-5544

STAMP

Point Line Space, Inc.  
75 Lowell Street  
Carlsle, MA 01741  
T. 617.314.7501  
POINT LINE SPACE

CLIENT  
BENJAMIN FRANKLIN  
INSTITUTE OF  
TECHNOLOGY

100% DESIGN DEVELOPMENT  
NOT FOR CONSTRUCTION

PROJECT TITLE  
BENJAMIN FRANKLIN  
CUMMINGS INSTITUTE OF  
TECHNOLOGY  
1011 HARRISON AVENUE, BOSTON, MA 02119

NO.	DESCRIPTION	DATE

PROJECT NO 21905.4  
DRAWN BY Author  
CHECKED BY Checker  
SCALE 1/4" = 1'-0"  
DATE 07/15/22

SHEET TITLE  
Auto Ctr/Electrical -  
Rrms 221/229

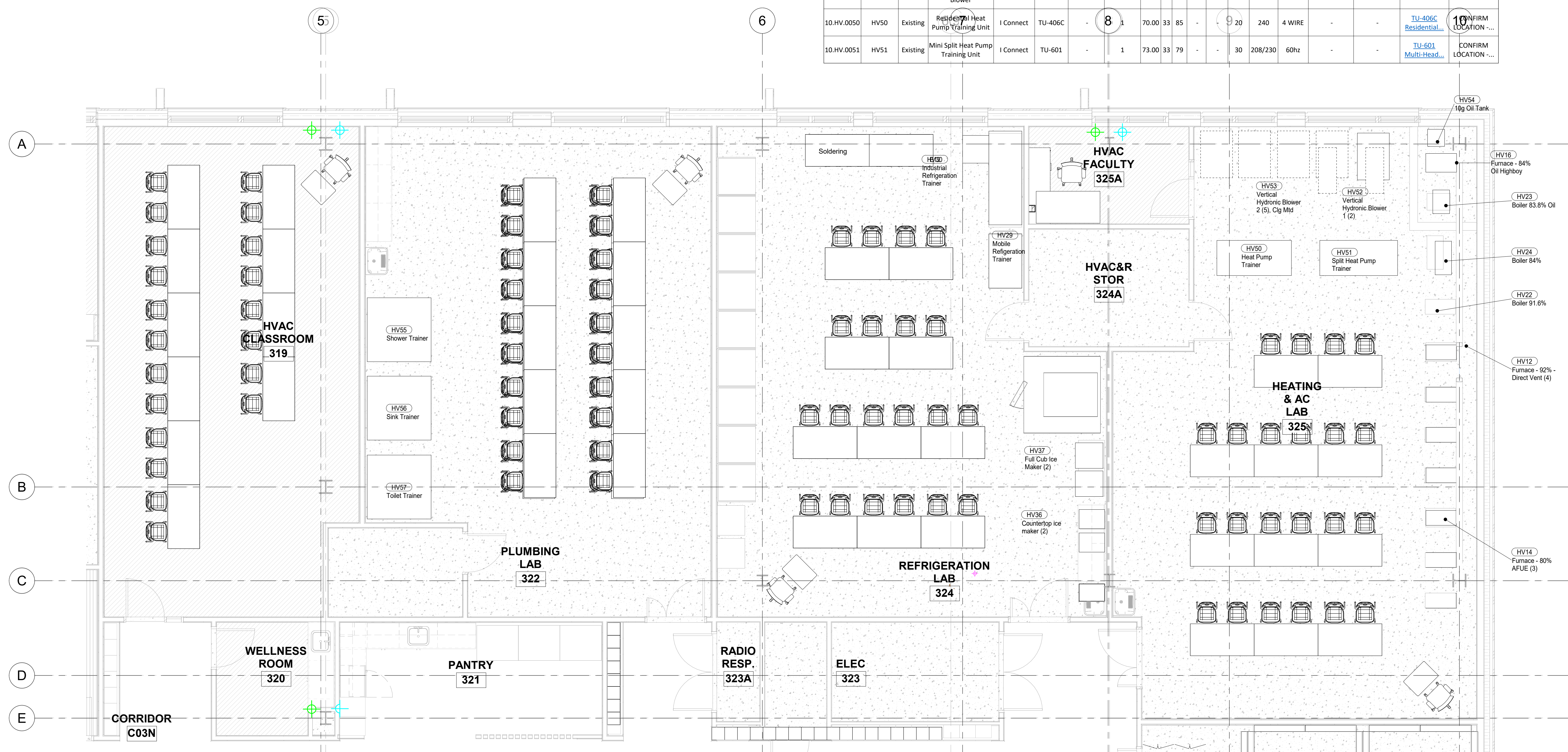
SHEET NO  
**EQ.07**

© 2020 STUDIO G ARCHITECTS

Code	REVI...	Desc	MFG	Model...	New...	L	D	CFM	HP	AMP	V	Phase	Connection	Web Link	Notes
10.HV.0055	HV55	Shower Trainer	-	-	1	6'	6'	-	-	-	120	-	-	-	BFCIT TO BUILD
10.HV.0056	HV56	Sink Trainer	-	-	1	6'	6'	-	-	-	120	-	-	-	BFCIT TO BUILD
10.HV.0057	HV57	Toilet Trainer	-	-	1	6'	6'	-	-	-	120	-	-	-	BFCIT TO BUILD
10.HV.0030	Existing	Tall Storage	-	-	4	-	-	-	-	-	-	-	-	-	-

Code	REVIT...	Use f...	Desc	Mfg	Model	New...	Existin...	L	D	H	CFM	HP	AMP	V	PH	Connection	Exhaust...	Web Link	Notes
10.HV.0022	-	Existing	Mobile Demo Stations	-	-	-	8	-	-	-	-	-	-	110	-	-	-	-	CUSTOM
10.HV.0023	-	Existing	AC Condenser w/Wall Unit	-	-	-	1	-	-	-	-	-	-	208v	-	-	-	-	-
10.HV.0024	-	Existing	AC Condenser	-	-	-	1	-	-	-	-	-	-	208	-	-	-	-	Confirm Location
10.HV.0025	-	Existing	Workbench w/vis	-	-	-	1	-	-	-	-	-	-	-	-	-	-	-	-
10.HV.0026	-	Existing	Work Bays	-	-	-	11	-	-	-	-	-	-	-	-	-	-	-	CUSTOM
10.HV.0027	HV29	Existing	Refrigeration System Trainer	Hampden	H-RST-2	-	1	48	24	60	-	-	-	120	1	-	-	<a href="https://nebula.wsimg.com/D...">https://nebula.wsimg.com/D...</a>	Water Connection/Drain needed
10.HV.0028 A	HV36	Existing	Countertop Ice Machines	-	-	-	2	-	-	-	-	-	10	115	1	-	-	-	Water Connection/Drain needed
10.HV.0028	HV37	Existing	Ice Machines	-	-	-	2	-	-	-	-	-	10	115	1	-	-	-	-
10.HV.0029	HV30	Existing	Industrial Refrigeration Trainer	Hampden	H-IRT-1	-	1	-	-	-	-	-	35	240/120	-	-	-	<a href="https://nebula.wsimg.com/a...">https://nebula.wsimg.com/a...</a>	-
10.HV.0030	-	Existing	Tall Storage	-	-	-	1	-	-	-	-	-	-	-	-	-	-	-	-
10.HV.0031	-	-	NEW MIT DONATED FRIDGE	Traulsen	G20002	-	1	53.00	35	84	1/3	9	115	1	-	-	-	-	CONFIRM
10.HV.0032	-	NEW	Soldering Station	-	-	1	0	TBD	TBD	TBD	TBD	TBD	TBD	120	1	-	-	<a href="http://www.weller.com/US/Products/15...">Weller MG100KIT15...</a>	CONFIRM

Code	REVIT TAG	Use for Project	Desc	MFG	Model	New Quantity	Existing Quantity	L	D	H	CFM	HP	AMP	V	Ph	Connection	BTU	Web Link	Notes
10.HV.0001	-	Existing Yes	Flammable Cabinet	-	-	-	1	43	18	44	-	-	-	-	-	-	-	<a href="https://www.globalindustrial.com/">https://www.globalindustrial.com/</a>	-
10.HV.0002	-	Existing	Tall Storage	-	-	-	1	-	-	-	-	-	-	-	-	-	-	-	-
10.HV.0003	-	Existing	Compressor Workstations	-	-	-	6	-	-	-	-	-	20	115	-	-	-	-	-
10.HV.0004	HV24	Existing	Boiler	Crown	-	-	1	16	32	40	-	-	-	115	-	GAS	88000	<a href="https://www.powersequipment.com/">https://www.powersequipment.com/</a>	Natural Gas
10.HV.0005	HV23	Existing	Boiler	Peerless	-	-	2	23	19	35	-	-	-	115	-	OIL	-	<a href="https://www.peerlessboilers.com/">https://www.peerlessboilers.com/</a>	OIL - From Tank?
10.HV.0006	HV16	Existing	Oil Furnace	Comfort Aire	-	-	1	TBD	-	-	-	-	-	115	-	OIL	67.5-85.5k	<a href="https://www.comfortaire.com/">https://www.comfortaire.com/</a>	OIL - From Tank?
10.HV.0007	HV14	Existing	Boiler Burner	Goodman	-	-	3	18	28	33	-	-	-	115	-	GAS	40000	<a href="https://hvactirect.com/goodman/">https://hvactirect.com/goodman/</a>	Natural Gas
10.HV.0021	HV12	Existing	Furnace - 92%	Goodman	-	-	4	-	-	-	-	-	-	115	-	-	40000	<a href="http://www.goodman-gms920402.com/">Goodman GMS920402</a>	-
10.HV.0008	-	Existing	AC Condenser	Goodman	-	-	3	-	-	-	-	-	-	208	1	-	-	-	Confirm Location ...
10.HV.0009	-	Existing	AC Wall Unit	-	-	-	1	-	-	-	-	-	-	-	-	-	-	-	-
10.HV.0010	-	Existing	Workbench w/Vis	-	-	-	1	-	-	-	-	-	-	-	-	-	-	-	-
10.HV.0011	-	Existing	LG AC Unit	-	-	-	1	-	-	-	-	-	-	208	3	-	-	-	Confirm Location ...
10.HV.0012	-	Existing	Boiler Burner	Power Flame	C1-G0-10	-	1	-	-	-	-	-	-	115	-	-	-	<a href="https://www.powerflame.com/">https://www.powerflame.com/</a>	Confirm Fuel Type
10.HV.0013	-	Existing	Mobile Refrigeration Stations	-	-	-	1	-	-	-	-	-	-	115	-	-	-	-	-
10.HV.0014	-	Existing	Workbays	-	-	-	5	-	-	-	-	-	-	-	-	-	-	-	-
10.HV.0015	-	Existing	Raised Ductwork	-	-	-	1	-	-	-	-	-	-	-	-	-	-	-	-
10.HV.0016	-	Existing	Welding Carts	-	-	-	2	-	-	-	-	-	-	-	-	-	-	<a href="https://www.airgas.com/pro...">https://www.airgas.com/pro...</a>	-
10.HV.0017	-	Existing	Ice Machine	-	-	-	1	-	-	-	-	-	7	115	1	-	-	-	Requires Water Connection &...
10.HV.0018	-	Existing	Tool Crib	-	-	-	1	-	-	-	-	-	-	-	-	-	-	-	-
10.HV.0019	-	Existing	Dehumidifiers	-	-	-	1	-	-	-	-	-	-	115	-	-	-	-	-
10.HV.0020	-	Existing	Oil Burner	Carlin	-	-	1	-	-	-	-	-	-	115	-	-	-	-	OIL - From Tank?
10.HV.0077	HV54	Existing	Vertical Hydronic Fan Coil Unit	SPACEPAK	-	-	2	-	-	-	-	-	-	230	1	-	-	-	CONFIRM
10.HV.0077	HV53	Existing	Vertical Hydronic Blower	SPACEPAK	-	-	5	-	-	-	3/4	11	115/230	-	-	-	-	-	CONFIRM
10.HV.0050	HV50	Existing	Residential Heat Pump Training Unit	1 Connect	TU-406C	8	1	70.00	33	85	-	-	9	240	4 WIRE	-	-	<a href="http://www.tu-406c-residential.com/">TU-406C Residential</a>	CONFIRM LOCATION ...
10.HV.0051	HV51	Existing	Mini Split Heat Pump Training Unit	1 Connect	TU-601	1	1	73.00	33	79	-	-	30	208/230	60hz	-	-	<a href="http://www.tu-601-multi-head.com/">TU-601 Multi-Head</a>	CONFIRM LOCATION ...



The Brewery  
179 Boylston Street  
Jamaica Plain, MA 02130  
T 617-524-5558  
F 617-524-5544

---

POINT LINE SPACE

Point Line Space, Inc.  
75 Lowell Street  
Carleise, MA 01741  
T. 617.314.7501

---

CUSTOMER

**BENJAMIN FRANKLIN INSTITUTE OF TECHNOLOGY**

---

100% DESIGN DEVELOPMENT  
NOT FOR CONSTRUCTION

---

PROJECT TITLE

**BENJAMIN FRANKLIN CUMMINGS INSTITUTE OF TECHNOLOGY**

1011 HARRISON AVENUE, BOSTON, MA 02119

---

NO.	DESCRIPTION	DATE

---

PROJECT NO. - 21905.4

DRAWN BY - Author

CHECKED BY - Checker

SCALE - 1/4" = 1'-0"

DATE - 07/15/22

---

SHEET TITLE

**HVAC/Plumbing 319/322/324/325**

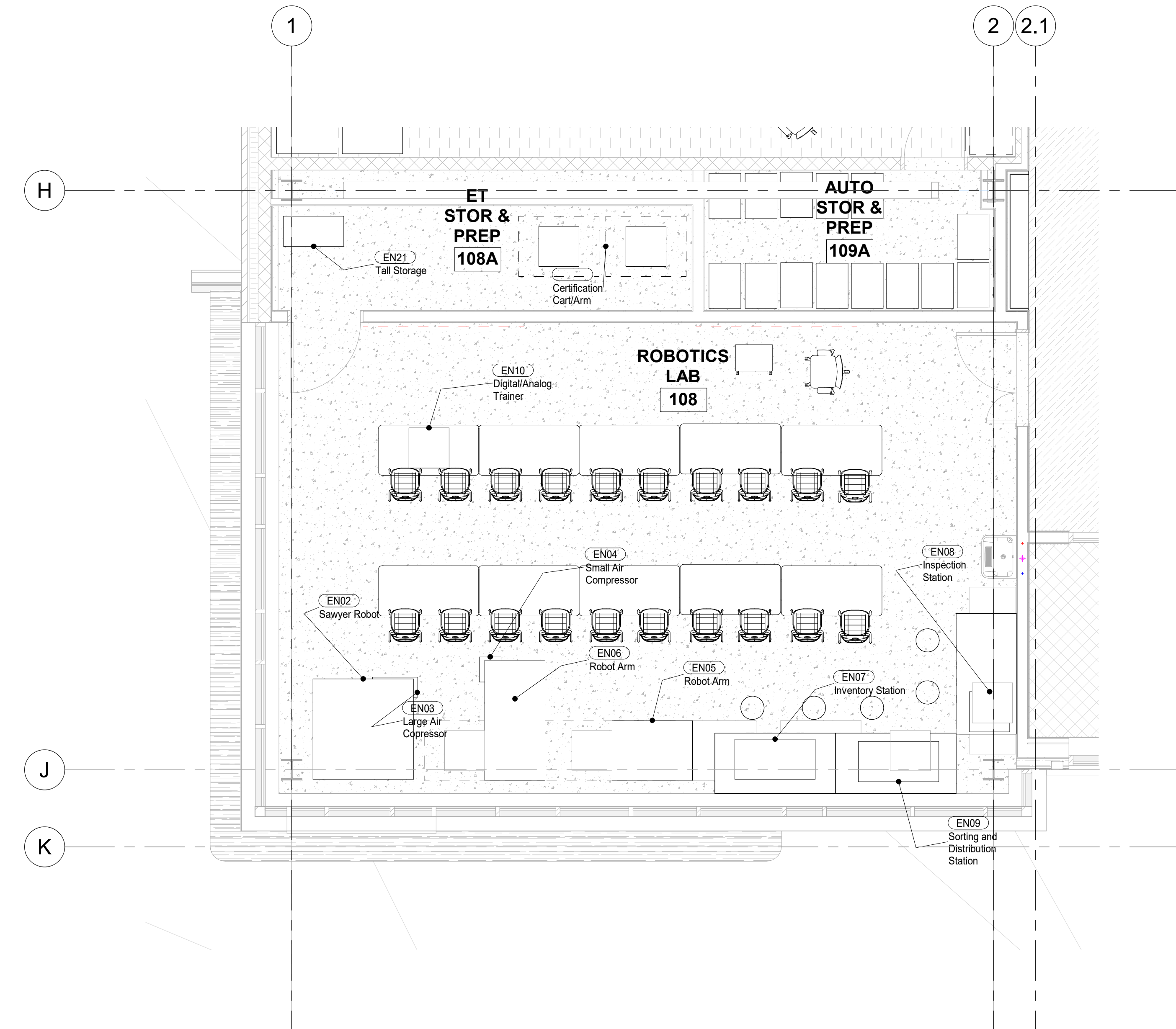
---

SHEET NO

**EQ.08**



Code	REVIT TAG	Use for Project	Desc	MFG	Model	New Quantity	Existing Quantity	L	D	H	CFM	HP	AMP	Voltage	Phase	Connection	Exhaust Port Size	Web Link	Notes
10.EN.0002	EN02	Existing Yes	Sawyer Robot	-	-	-	1	60	60	72	-	4	220	-	DATA	-	-	<a href="https://www.rethinkrobotics.com/">https://www.rethinkrobotics.com/</a>	Air supplied from...
10.EN.0003	EN03	Existing Yes	Large Air Copressor	Campbell Hausfeld	-	-	1	27	12	26	-	1.3	10	120	1	-	-	<a href="https://www.campbellhausfeld.com/">https://www.campbellhausfeld.com/</a>	-
10.EN.0004	EN04	Existing Yes	Small Air Compressor	California Air Tools	-	-	1	13	15	15	-	6-1.2	-	120	1	-	-	<a href="https://www.californiaairtools.com/">https://www.californiaairtools.com/</a>	-
10.EN.0005	EN05	Existing Yes	Robot Arm	Axis	AXR2-03000	-	1	48	36	60	-	-	-	120	1	-	-	<a href="https://shop.axis.com/uni...">https://shop.axis.com/uni...</a>	-
10.EN.0006	EN06	Existing Yes	Robot Arm	Axis	AXR2-05000	-	1	72	36	84	-	-	-	120	1	-	-	<a href="https://shop.axis.com/uni...">https://shop.axis.com/uni...</a>	-
10.EN.0007	EN07	Existing Yes	Inventory Station	Amatrol	87-TMS1	-	1	48	24	36	-	-	-	120	1	-	-	<a href="https://amatrol.com/coursep...">https://amatrol.com/coursep...</a>	-
10.EN.0008	EN08	Existing Yes	Inspection Station	Amatrol	87-TMS2	-	1	48	24	36	-	-	-	120	1	-	-	<a href="https://amatrol.com/coursep...">https://amatrol.com/coursep...</a>	-
10.EN.0009	EN09	Existing Yes	Sorting and Distribution Station	Amatrol	87-TMS3	-	1	24	24	36	-	-	-	120	1	-	-	<a href="https://amatrol.com/coursep...">https://amatrol.com/coursep...</a>	-
10.EN.0010	EN10	Existing Yes	Digital/Analog Trainer	Elenco	500/700	-	1	24	24	36	-	-	-	120	1	-	-	<a href="https://www.elenco.com/wp...">https://www.elenco.com/wp...</a>	-
10.AM.0001	AM01	Existing Yes	Fanuc Certification Cart	Fanuc	LR Mate	0	2	47.5	27	72	-	-	-	120	1	DATA	-	<a href="#">FANUC Fenceless Car...</a>	-
10.EN.0011	-	NEW	Soldering Fume Extractor	EDSYN	FXF11	5	0	-	-	-	-	-	-	120	-	-	-	<a href="#">EDSYN FXF11 Static-Safe...</a>	-



1 108 - Robotics Lab  
1/4" = 1'-0"



100% DESIGN DEVELOPMENT  
NOT FOR CONSTRUCTION

PROJECT NO 21905.4  
DRAWN BY Author  
CHECKED BY Checker  
SCALE 1/4" = 1'-0"  
DATE 07/15/22

SHEET TITLE  
**Robotics**

SHEET NO  
**EQ.09**

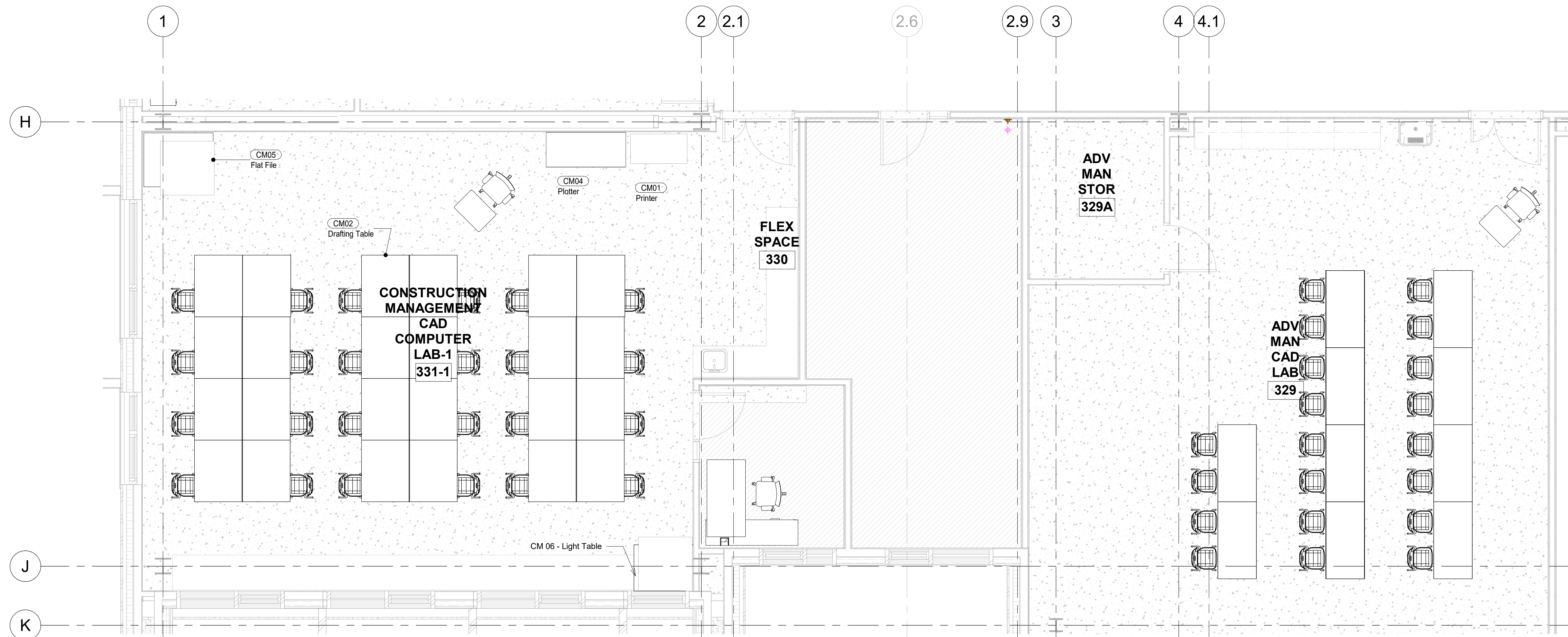
PROJECT TITLE  
**BENJAMIN FRANKLIN CUMMINGS INSTITUTE OF TECHNOLOGY**

1011 HARRISON AVENUE, BOSTON, MA 02119

© 2022 STUDIO G ARCHITECTS

Code	REVIT...	Use f...	Desc	MFG	Model	New...	Existin...	L	D	H	CFM	HP	AMP	V	Ph	Connection	Exhaust...	Web Link	Notes
10.CM.0001	CM01	Existing Yes	Printer	Canon	Image Runner Advance C55501	-	1	44	23	45	-	-	11.5	120-127V	-	5-20P	-	<a href="https://www.usa.canon.com...">https://www.usa.canon.com...</a>	
10.CM.0002	CM02	New Yes	Drafting Tables	-	-	-	16	48.00	37.5	-	-	-	-	-	-	-	-	<a href="#">Banner Steel 4-Post Table...</a>	Existing size works
10.CM.0003	-	Yes New	Computer Stations	-	-	24	15	-	-	-	-	-	110	-	-	-	-	-	Moved to Computer Lab
10.CM.0004	CM04	Yes New	Plotter	HP	1050c Plus	-	1	27	62	51	-	-	1.2	100-240	-	-	-	<a href="https://www.hpplotter.co.us...">https://www.hpplotter.co.us...</a>	
10.CM.0005	CM05	Existing Yes	Flat File	10 Drawer	-	-	1	54	42	36	-	-	-	-	-	-	-	<a href="https://www.tigersupplies.c...">https://www.tigersupplies.c...</a>	
10.CM.0006	CM06	Existing Yes	Light Table	-	-	-	36	48	-	-	-	-	3	120v	-	-	-	<a href="https://www.schoolspecialty...">https://www.schoolspecialty...</a>	

Code	REVIT...	Use f...	Desc.	MFG	Model	Ne...	Exi...	L	D	H	W	CFM	HP	AMP	V	Ph	Connection	Exhaust...	Link	Notes
10.AM.0002	-	Existing Yes	Control Simulator	HAAS	CSMD	0	12	-	-	-	-	-	-	1.5	115/230 VAC	1	-	NA	<a href="https://www.hausnc.com/p...">https://www.hausnc.com/p...</a>	



NO.	DESCRIPTION	DATE

PROJECT NO 21905.4

DRAWN BY Author

CHECKED BY Checker

SCALE 1/4" = 1'-0"

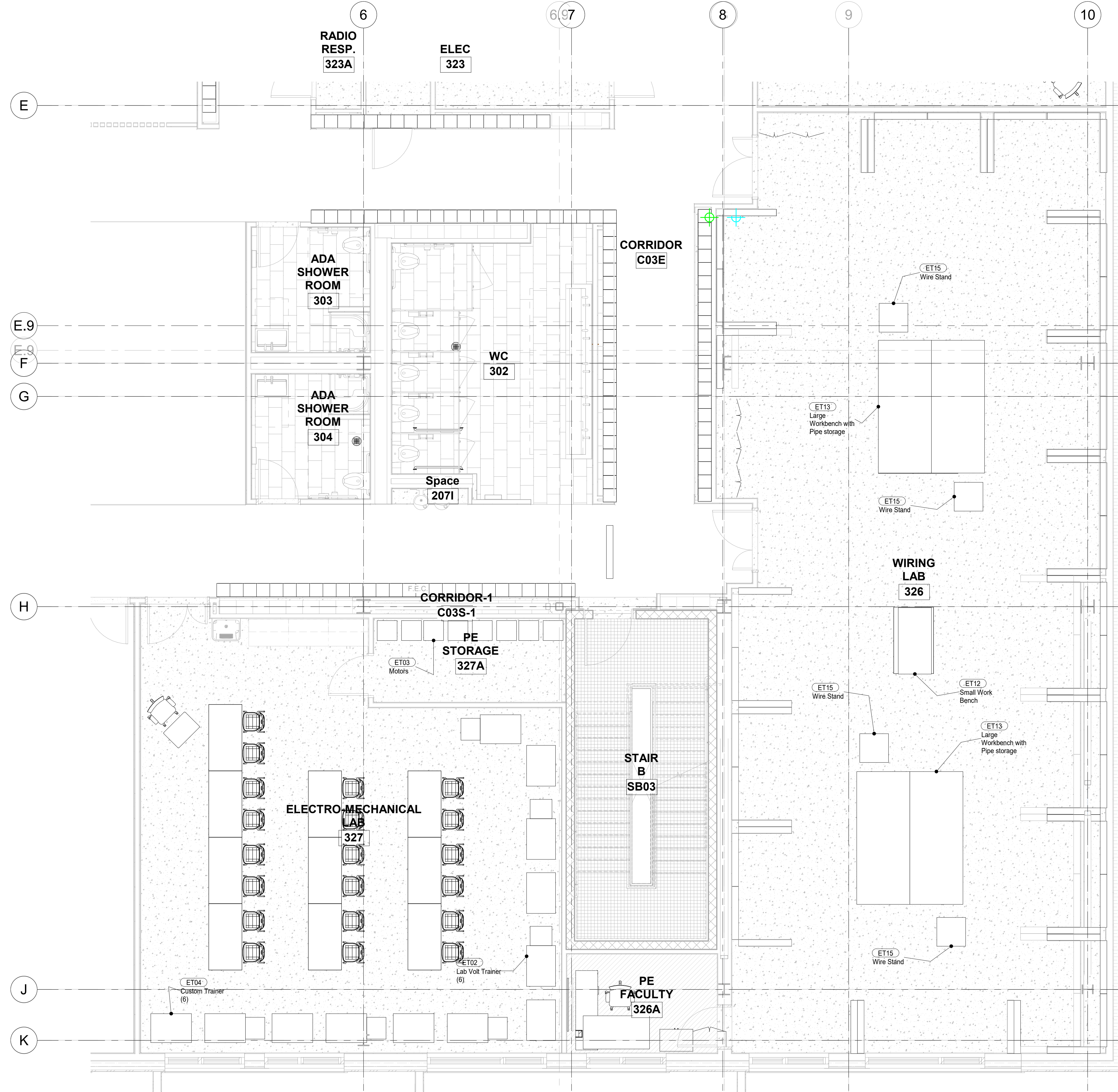
DATE 07/15/22

SHEET TITLE  
**CM & CAD**

SHEET NO  
**EQ.10**

Item Code	REVIT TAG	Code	Use for Project	Desc	MFG	Model	New Quantity	Existing Quantity	L	D	H	W	CFM	HP	AMP	Voltage	Phase	Connection	Exhaust Port Size	Web Link	Notes
10.ET.0002	ET02		Existing Yes	Trainers	Lab-Volt	8110-20	-	6	27	37	60	-	-	TBD	TBD	TBD	TBD	TBD	-	<a href="https://labvolt.festo.com/sol...">https://labvolt.festo.com/sol...</a>	Which location for these?
10.ET.0003	ET03		Existing Yes	Motors	Lab-Volt	Various	-	18	18	18	18	-	-	TBD	TBD	TBD	TBD	TBD	-		NEED TO CONFIRM...
10.ET.0004	ET04		Existing Yes	Trainers	Custom	-	-	6	27	37	60	-	-	TBD	TBD	TBD	TBD	TBD	-		NEED TO CONFIRM POWER FOR ALL ITEMS
10.ET.0005	-		Existing	Tall Storage	-	-	-	2													
10.ET.0006	-		Existing	Storage Rack	-	-	-	1													

Code	REVIT TAG	Use for Project	Desc	MFG	Model	New Quantity	Existing Quantity	L	D	H	CFM	HP	AMP	V	Ph	Connection	Exhaust Port Size	Web Link	Notes	
10.ET.0008	-	Existing	Tall Storage Cabinets	-	-	0	4	-	-	-	-	-	-	-	-	-	-	-	-	
10.ET.0009	-	Existing Yes	Large Workbench with Lockable Storage	-	-	0	1	-	-	-	-	-	-	-	-	-	-	-	-	
10.ET.0010	-	Existing	Storage Bins	-	-	0	6	-	-	-	-	-	-	-	-	-	-	-	-	
10.ET.0011	-	Existing	2 Drawer Horizontal File	-	-	0	1	-	-	-	-	-	-	-	-	-	-	-	-	
10.ET.0012	ET12	Existing Yes	Small Work Bench	-	-	0	1	-	-	-	-	-	-	-	-	-	-	-	-	
10.ET.0013	ET13	Existing Yes	Large Workbench with Pipe storage	-	-	3	1	-	-	-	-	-	-	-	-	-	-	-	-	
10.ET.0014	-	Existing	Vise	-	-	0	1	-	-	-	-	-	-	-	-	-	-	-	-	<a href="https://www.harborfreight.com/6-in-swivel...">https://www.harborfreight.com/6-in-swivel...</a>
10.ET.0015	ET15	Existing Yes	Wire Stand	Greenlee	BX 37218	2	2	26	26	14	-	-	-	-	-	-	-	-	-	<a href="https://www.greenlee.com/us/en/standbx...">https://www.greenlee.com/us/en/standbx...</a>



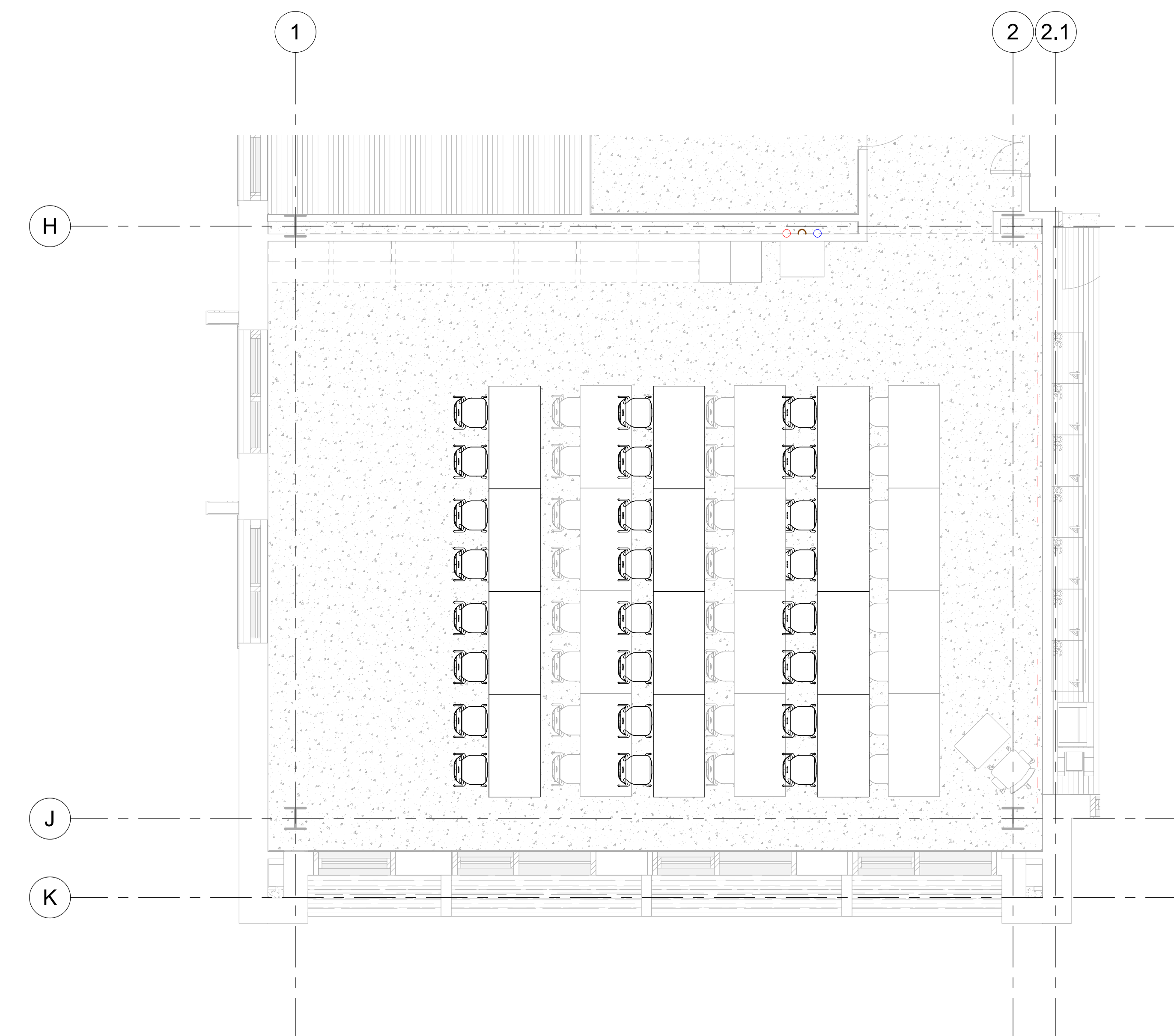
NO.	DESCRIPTION	DATE

PROJECT NO	21905.4
DRAWN BY	Author
CHECKED BY	Checker
SCALE	1/4" = 1'-0"
DATE	07/15/22

SHEET TITLE	<b>EM &amp; Wiring</b>
-------------	------------------------

SHEET NO	<b>EQ.11</b>
----------	--------------

Code	REVIT TAG	Use for Project	Desc	MFG	Model	New Quantity	Existing Quantity	L	D	H	CFM	HP	AMP	V	Ph	Connection	Exhaust Port Size	Web Link	Notes
10.SC.0001	-	Existing	Oscilloscopes	-	-	-	3	-	-	-	-	-	-	110	-	-	-	-	
10.SC.0002	-	Existing	Balances	-	-	-	6	-	-	-	-	-	-	-	-	-	-	-	
10.SC.0003	-	Existing	Wave Meters	-	-	-	3	-	-	-	-	-	-	110	-	-	-	-	
10.SC.0004	-	Existing	Lab Tables With Storage	-	-	-	6	-	-	-	-	-	-	-	-	-	-	-	
10.SC.0005	-	Existing	Hardness Tester	-	-	-	1	-	-	-	-	-	-	-	-	-	-	-	
10.SC.0006	-	Existing	Vacuum Pump	-	-	-	1	-	-	-	-	-	-	110	-	-	-	-	
10.SC.0007	-	Existing	Mercury Barometer	-	-	-	1	-	-	-	-	-	-	-	-	-	-	-	
10.SC.0008	-	Existing	Asst. Bench top Items	-	-	-	12	-	-	-	-	-	-	110	-	-	-	-	
10.SC.0009	-	New Yes	Human Torso Model with Head and Open Back	Somso	-	-	-	-	-	-	-	-	-	-	-	-	-	-	<a href="https://www.carolina.com/">https://www.carolina.com/...</a>
10.SC.0010	-	New Yes	Heart of America Model	Nebraska Scientific	-	-	-	-	-	-	-	-	-	-	-	-	-	-	<a href="https://www.nebraskascient.com/">https://www.nebraskascient.com/...</a>
10.SC.0011	-	New Yes	Perfect Solution Preserved Sheep Hearts	Carolina	-	-	-	-	-	-	-	-	-	-	-	-	-	-	<a href="https://www.carolina.com/pr...">https://www.carolina.com/pr...</a>
10.SC.0012	-	New Yes	Human Skull Color Coded	Carolina	-	-	-	-	-	-	-	-	-	-	-	-	-	-	<a href="https://www.carolina.com/h...">https://www.carolina.com/h...</a>
10.SC.0013	-	New Yes	Economy Human Muscular Skeleton, Ha...	Altay	-	-	-	-	-	-	-	-	-	-	-	-	-	-	<a href="https://www.carolina.com/h...">https://www.carolina.com/h...</a>
10.SC.0014	-	New Yes	Median and Frontal Section of the Head...	Nebraska Scientific	-	-	-	-	-	-	-	-	-	-	-	-	-	-	<a href="https://www.nebraskascient.com/">https://www.nebraskascient.com/...</a>
10.SC.0015	-	New Yes	Human Circulatory System Model	Nebraska Scientific	-	-	-	-	-	-	-	-	-	-	-	-	-	-	<a href="https://www.nebraskascient.com/">https://www.nebraskascient.com/...</a>
10.SC.0016	-	New Yes	1/4 Life Size Dual Sex Human Muscle Model	Nebraska Scientific	-	-	-	-	-	-	-	-	-	-	-	-	-	-	<a href="https://www.nebraskascient.com/">https://www.nebraskascient.com/...</a>
10.SC.0017	-	New Yes	Human Lung Model with Larynx	Nebraska Scientific	-	-	-	-	-	-	-	-	-	-	-	-	-	-	<a href="https://www.nebraskascient.com/">https://www.nebraskascient.com/...</a>
10.SC.0018	-	New Yes	38 Microanatomy of the Digestive System Model	Carolina	-	-	-	-	-	-	-	-	-	-	-	-	-	-	<a href="https://www.carolina.com/h...">https://www.carolina.com/h...</a>
10.SC.0019	-	New Yes	Human Digestive System Model	Altay	-	-	-	-	-	-	-	-	-	-	-	-	-	-	<a href="https://www.carolina.com/h...">https://www.carolina.com/h...</a>
10.SC.0020	-	New Yes	Human Digestive System Model	Altay	-	-	-	-	-	-	-	-	-	-	-	-	-	-	<a href="https://www.carolina.com/h...">https://www.carolina.com/h...</a>
10.SC.0021	-	New Yes	Stomach Model, 1.5X Life-Size, 2-Part	Nebraska Scientific	-	-	-	-	-	-	-	-	-	-	-	-	-	-	<a href="https://www.nebraskascient.com/">https://www.nebraskascient.com/...</a>
10.SC.0022	-	New Yes	Liver and Gall Bladder with Pancreas and...	Carolina	-	-	-	-	-	-	-	-	-	-	-	-	-	-	<a href="https://www.carolina.com/h...">https://www.carolina.com/h...</a>
10.SC.0023	-	New Yes	Urinary System Model, Free Standing	Nebraska Scientific	-	-	-	-	-	-	-	-	-	-	-	-	-	-	<a href="https://www.nebraskascient.com/">https://www.nebraskascient.com/...</a>
10.SC.0024	-	New Yes	Human Kidney Section Model With Nephrons...	Nebraska Scientific	-	-	-	-	-	-	-	-	-	-	-	-	-	-	<a href="https://www.nebraskascient.com/">https://www.nebraskascient.com/...</a>
10.SC.0025	-	New Yes	Deluxe Kidney and Adrenal Gland Model	Altay	-	-	-	-	-	-	-	-	-	-	-	-	-	-	<a href="https://www.carolina.com/h...">https://www.carolina.com/h...</a>
10.SC.0026	-	New Yes	Human Male Half Pelvis Model	Somso	-	-	-	-	-	-	-	-	-	-	-	-	-	-	<a href="https://www.carolina.com/h...">https://www.carolina.com/h...</a>
10.SC.0027	-	New Yes	Somso Human Female Half Pelvis Model	Somso	-	-	-	-	-	-	-	-	-	-	-	-	-	-	<a href="https://www.carolina.com/h...">https://www.carolina.com/h...</a>
10.SC.0028	-	New Yes	Human Ovary Model	Altay	-	-	-	-	-	-	-	-	-	-	-	-	-	-	<a href="https://www.carolina.com/h...">https://www.carolina.com/h...</a>
10.SC.0029	-	New Yes	Deluxe Pregnancy Models Series, 9...	Nebraska Scientific	-	-	-	-	-	-	-	-	-	-	-	-	-	-	<a href="https://www.nebraskascient.com/">https://www.nebraskascient.com/...</a>
10.SC.0030	-	New Yes	Pregnancy Pelvis With Mature Fetus, 2-Part	Nebraska Scientific	-	-	-	-	-	-	-	-	-	-	-	-	-	-	<a href="https://www.nebraskascient.com/">https://www.nebraskascient.com/...</a>
10.SC.0031	-	New Yes	Model of Female Fetus	Somso	-	-	-	-	-	-	-	-	-	-	-	-	-	-	<a href="https://www.gt-simulators.co...">https://www.gt-simulators.co...</a>
10.SC.0032	-	New Yes	Animal Cell Model	Staco	-	-	-	-	-	-	-	-	-	-	-	-	-	-	<a href="https://www.carolina.com/c...">https://www.carolina.com/c...</a>
10.SC.0033	-	New Yes	Human Neuron Model	Somso	-	-	-	-	-	-	-	-	-	-	-	-	-	-	<a href="https://www.carolina.com/h...">https://www.carolina.com/h...</a>
10.SC.0034	-	New Yes	Motor Neuron Diorama Model	Nebraska Scientific	-	-	-	-	-	-	-	-	-	-	-	-	-	-	<a href="https://www.nebraskascient.com/">https://www.nebraskascient.com/...</a>
10.SC.0035	-	New Yes	Spinal Cord in the Spinal Canal	Somso	-	-	-	-	-	-	-	-	-	-	-	-	-	-	<a href="https://www.gt-simulators.co...">https://www.gt-simulators.co...</a>
10.SC.0036	-	New Yes	Fifth Cervical Vertebra Model	Altay	-	-	-	-	-	-	-	-	-	-	-	-	-	-	<a href="https://www.carolina.com/h...">https://www.carolina.com/h...</a>
10.SC.0037	-	New Yes	Human Brain Model With Arteries On Base Of...	Nebraska Scientific	-	-	-	-	-	-	-	-	-	-	-	-	-	-	<a href="https://www.nebraskascient.com/">https://www.nebraskascient.com/...</a>
10.SC.0038	-	New Yes	Human Eye in Orbit Model	Somso	-	-	-	-	-	-	-	-	-	-	-	-	-	-	<a href="https://www.carolina.com/h...">https://www.carolina.com/h...</a>
10.SC.0039	-	New Yes	Giant Ear Model, 3-Part	Nebraska Scientific	-	-	-	-	-	-	-	-	-	-	-	-	-	-	<a href="https://www.nebraskascient.com/">https://www.nebraskascient.com/...</a>
10.SC.0040	-	New Yes	Human Endocrine Organs Model	Altay	-	-	-	-	-	-	-	-	-	-	-	-	-	-	<a href="https://www.carolina.com/h...">https://www.carolina.com/h...</a>
10.SC.0041	-	New Yes	Advanced LED Series Binocular Microscope...	Wolfe	-	-	-	-	-	-	-	-	-	-	-	-	-	-	<a href="https://www.carolina.com/c...">https://www.carolina.com/c...</a>
10.SC.0042	-	New Yes	Comprehensive Medical Histology Slide Set	Wolfe	-	-	-	-	-	-	-	-	-	-	-	-	-	-	<a href="https://www.carolina.com/ni...">https://www.carolina.com/ni...</a>
10.SC.0043	-	New Yes	Large Microscope Case	Wolfe	-	-	-	-	-	-	-	-	-	-	-	-	-	-	<a href="https://www.carolina.com/m...">https://www.carolina.com/m...</a>
10.SC.0044	-	New Yes	Lens Cleaning Kit	Carolina	-	-	-	-	-	-	-	-	-	-	-	-	-	-	<a href="https://www.carolina.com/m...">https://www.carolina.com/m...</a>
10.SC.0045	-	New Yes	Cow Eye, Plain, 1 Per Bag	Carolina	-	-	-	-	-	-	-	-	-	-	-	-	-	-	<a href="https://www.carolina.com/pr...">https://www.carolina.com/pr...</a>
10.SC.0046	-	New Yes	Eye Dissection Student Kit	Carolina	-	-	-	-	-	-	-	-	-	-	-	-	-	-	<a href="https://www.carolina.com/m...">https://www.carolina.com/m...</a>
10.SC.0047	-	New Yes	Mammalian Brain Dissection BioKit* with...	Carolina	-	-	-	-	-	-	-	-	-	-	-	-	-	-	<a href="https://www.carolina.com/di...">https://www.carolina.com/di...</a>



1 Physics  
1/4" = 1'-0"

NO.	DESCRIPTION	DATE